



[Go to Product page](#)

Datasheet for ABIN5675305
anti-GPR75 antibody (AA 151-250)

1 Image

Overview

Quantity:	100 µL
Target:	GPR75
Binding Specificity:	AA 151-250
Reactivity:	Mouse
Host:	Rabbit
Clonality:	Polyclonal
Conjugate:	This GPR75 antibody is un-conjugated
Application:	Western Blotting (WB), ELISA, Immunohistochemistry (Paraffin-embedded Sections) (IHC (p)), Immunocytochemistry (ICC), Immunofluorescence (Cultured Cells) (IF (cc)), Immunofluorescence (Paraffin-embedded Sections) (IF (p)), Immunohistochemistry (Frozen Sections) (IHC (fro))

Product Details

Immunogen:	KLH conjugated synthetic peptide derived from human GPCR GPR75
Isotype:	IgG
Cross-Reactivity:	Mouse
Predicted Reactivity:	Human
Purification:	Purified by Protein A.

Target Details

Target:	GPR75
---------	-------

Target Details

Alternative Name: GPR75 ([GPR75 Products](#))

Background: Synonyms: Probable G-protein coupled receptor 75, GPR75,
Background: G protein-coupled receptor that is activated by the chemokine CCL5/RANTES.
Probably coupled to heterotrimeric Gq proteins, it stimulates inositol trisphosphate production and calcium mobilization upon activation. Together with CCL5/RANTES, may play a role in neuron survival through activation of a downstream signaling pathway involving the PI3, Akt and MAP kinases. CCL5/RANTES may also regulate insulin secretion by pancreatic islet cells through activation of this receptor.

Gene ID: 10936

UniProt: [O95800](#)

Application Details

Application Notes: WB 1:300-5000
ELISA 1:500-1000
IHC-P 1:200-400
IHC-F 1:100-500
IF(IHC-P) 1:50-200
IF(IHC-F) 1:50-200
IF(ICC) 1:50-200
ICC 1:100-500

Restrictions: For Research Use only

Handling

Format: Liquid

Concentration: 1 µg/µL

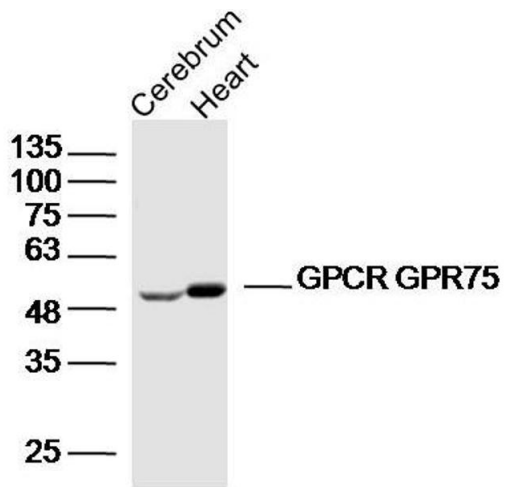
Buffer: 0.01M TBS(pH 7.4) with 1 % BSA, 0.02 % Proclin300 and 50 % Glycerol.

Preservative: ProClin

Precaution of Use: This product contains ProClin: a POISONOUS AND HAZARDOUS SUBSTANCE, which should be handled by trained staff only.

Storage: 4 °C,-20 °C

Storage Comment: Shipped at 4°C. Store at -20°C for one year. Avoid repeated freeze/thaw cycles.



Western Blotting

Image 1. Lane 1: Mouse cerebrum lysates Lane 2: mouse heart lysates probed with GPCR GPR75 Polyclonal Antibody, Unconjugated at 1:300 dilution and 4°C overnight incubation. Followed by conjugated secondary antibody incubation at 1:10000 for 60 min at 37°C.