



[Go to Product page](#)

Datasheet for ABIN5675323
anti-MLZE antibody (AA 1-100)

1 Image

Overview

| | |
|----------------------|---|
| Quantity: | 100 µL |
| Target: | MLZE |
| Binding Specificity: | AA 1-100 |
| Reactivity: | Human |
| Host: | Rabbit |
| Clonality: | Polyclonal |
| Conjugate: | This MLZE antibody is un-conjugated |
| Application: | Western Blotting (WB), ELISA, Immunofluorescence (Cultured Cells) (IF (cc)), Immunofluorescence (Paraffin-embedded Sections) (IF (p)), Immunohistochemistry (Paraffin-embedded Sections) (IHC (p)), Immunocytochemistry (ICC), Immunohistochemistry (Frozen Sections) (IHC (fro)) |

Product Details

| | |
|-------------------|---|
| Immunogen: | KLH conjugated synthetic peptide derived from human GSDMC |
| Isotype: | IgG |
| Cross-Reactivity: | Human |
| Purification: | Purified by Protein A. |

Target Details

| | |
|-------------------|---|
| Target: | MLZE |
| Alternative Name: | GSDMC (MLZE Products) |

Target Details

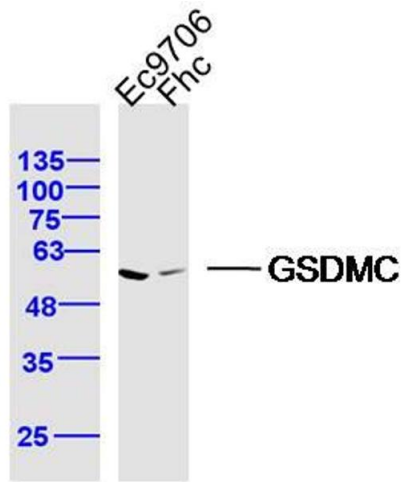
| | |
|-------------|--|
| Background: | Synonyms: Gasdermin C, Gasdermin-C, GSDMC, GSDMC_HUMAN, Melanoma derived leucine zipper, extra nuclear factor, Melanoma-derived leucine zipper-containing extranuclear factor, MLZE Background: The N-terminal moiety promotes pyroptosis. May be acting by homooligomerizing within the membrane and forming pores (PubMed:27281216). The physiological relevance of this observation is unknown (Probable). |
| Gene ID: | 56169 |
| UniProt: | Q9BYG8 |

Application Details

| | |
|--------------------|--|
| Application Notes: | WB 1:300-5000 ELISA 1:500-1000 IHC-P 1:200-400 IHC-F 1:100-500 IF(IHC-P) 1:50-200 IF(IHC-F) 1:50-200 IF(ICC) 1:50-200 ICC 1:100-500 |
| Restrictions: | For Research Use only |

Handling

| | |
|--------------------|--|
| Format: | Liquid |
| Concentration: | 1 µg/µL |
| Buffer: | 0.01M TBS(pH 7.4) with 1 % BSA, 0.02 % Proclin300 and 50 % Glycerol. |
| Preservative: | ProClin |
| Precaution of Use: | This product contains ProClin: a POISONOUS AND HAZARDOUS SUBSTANCE, which should be handled by trained staff only. |
| Storage: | 4 °C,-20 °C |
| Storage Comment: | Shipped at 4°C. Store at -20°C for one year. Avoid repeated freeze/thaw cycles. |
| Expiry Date: | 12 months |



Western Blotting

Image 1. Lane 1: Ec9706 lysates Lane 2: FHC lysates probed with GSDMC Polyclonal Antibody, Unconjugated at 1:300 dilution and 4°C overnight incubation. Followed by conjugated secondary antibody incubation at 1:10000 for 60 min at 37°C.