

Datasheet for ABIN5675446
anti-ADAM2 antibody (AA 451-550)



[Go to Product page](#)

1 Image

Overview

Quantity:	100 µL
Target:	ADAM2
Binding Specificity:	AA 451-550
Reactivity:	Human
Host:	Rabbit
Clonality:	Polyclonal
Conjugate:	This ADAM2 antibody is un-conjugated
Application:	Western Blotting (WB), ELISA, Immunofluorescence (Cultured Cells) (IF (cc)), Immunofluorescence (Paraffin-embedded Sections) (IF (p)), Immunohistochemistry (Frozen Sections) (IHC (fro)), Immunohistochemistry (Paraffin-embedded Sections) (IHC (p)), Immunocytochemistry (ICC)

Product Details

Immunogen:	KLH conjugated synthetic peptide derived from human ADAM2
Isotype:	IgG
Cross-Reactivity:	Human
Purification:	Purified by Protein A.

Target Details

Target:	ADAM2
Alternative Name:	ADAM2 (ADAM2 Products)

Target Details

Background: Synonyms: A disintegrin and metalloproteinase domain 2, ADAM 2, ADAM metalloproteinase domain 2, Adam2, ADAM2_HUMAN, AI323749, Cancer/testis antigen 15, CRYN1, CRYN2, CT15, Disintegrin and metalloproteinase domain-containing protein 2, Fertilin beta, Fertilin subunit beta, Ftnb, PH 30, PH 30b, PH-30, PH30, Ph30 beta, PH30-beta.

Background: Interactions with egg membrane could be mediated via binding between its disintegrin-like domain to one or more integrins receptors on the egg. This is a non catalytic metalloprotease-like protein.

Gene ID: 2515

UniProt: [Q99965](#)

Application Details

Application Notes: WB 1:300-5000
ELISA 1:500-1000
IHC-P 1:200-400
IHC-F 1:100-500
IF(IHC-P) 1:50-200
IF(IHC-F) 1:50-200
IF(ICC) 1:50-200
ICC 1:100-500

Restrictions: For Research Use only

Handling

Format: Liquid

Concentration: 1 µg/µL

Buffer: 0.01M TBS(pH 7.4) with 1 % BSA, 0.02 % Proclin300 and 50 % Glycerol.

Preservative: ProClin

Precaution of Use: This product contains ProClin: a POISONOUS AND HAZARDOUS SUBSTANCE, which should be handled by trained staff only.

Storage: 4 °C, -20 °C

Storage Comment: Shipped at 4°C. Store at -20°C for one year. Avoid repeated freeze/thaw cycles.

Expiry Date: 12 months

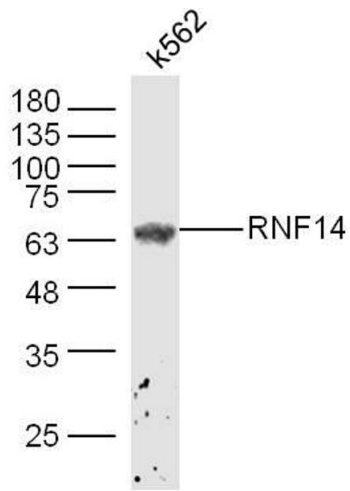


Image 1. K562 lysates probed with ADAM2 Polyclonal Antibody, Unconjugated at 1:300 dilution and 4°C overnight incubation. Followed by conjugated secondary antibody incubation at 1:10000 for 60 min at 37°C.