

Datasheet for ABIN5675461

anti-CD209b Antigen (CD209B) (AA 51-150) antibody[Go to Product page](#)**1** Image

Overview

Quantity:	100 µL
Target:	CD209b Antigen (CD209B)
Binding Specificity:	AA 51-150
Reactivity:	Mouse
Host:	Rabbit
Clonality:	Polyclonal
Conjugate:	Un-conjugated
Application:	Western Blotting (WB), Immunofluorescence (Cultured Cells) (IF (cc)), Immunofluorescence (Paraffin-embedded Sections) (IF (p)), Immunohistochemistry (Frozen Sections) (IHC (fro)), Immunohistochemistry (Paraffin-embedded Sections) (IHC (p)), ELISA, Immunocytochemistry (ICC)

Product Details

Immunogen:	KLH conjugated synthetic peptide derived from human CD209b
Isotype:	IgG
Cross-Reactivity:	Mouse
Purification:	Purified by Protein A.

Target Details

Target:	CD209b Antigen (CD209B)
Alternative Name:	CD209b (CD209B Products)

Target Details

Background:	<p>Synonyms: SIGN Related 1, CD209 antigen like protein B, CD209b antigen, DC SIGN related protein 1, DC SIGNR1, OtB7</p> <p>Background: SIGN R1 is a specific marker for the identification of macrophage subpopulations present in the marginal zone of spleen (the so-called marginal zone macrophages (MZM)), in the lymph node medulla, and in some strains, in the peritoneal cavity. MZM of the spleen are involved in the clearance of polysaccharides. Mouse SIGN R1 is a C type lectin, like DC SIGN which is expressed on Human dendritic cells (DCs). However, Mmouse SIGN R1 itself is not expressed on DCs. SIGN R1 exists in an aggregated form, resistant to dissociation into monomers upon boiling in SDS under reducing conditions. SIGN R1 mediates the uptake of encapsulated organisms and may be an important mediator for the uptake of microbes in both spleen and lymph node, particularly through the recognition of microbial polysaccharides.</p>
Gene ID:	69165
UniProt:	Q8CJ91

Application Details

Application Notes:	<p>WB 1:300-5000</p> <p>ELISA 1:500-1000</p> <p>IHC-P 1:200-400</p> <p>IHC-F 1:100-500</p> <p>IF(IHC-P) 1:50-200</p> <p>IF(IHC-F) 1:50-200</p> <p>IF(ICC) 1:50-200</p> <p>ICC 1:100-500</p>
Restrictions:	For Research Use only

Handling

Format:	Liquid
Concentration:	1 µg/µL
Buffer:	0.01M TBS(pH 7.4) with 1 % BSA, 0.02 % Proclin300 and 50 % Glycerol.
Preservative:	ProClin
Precaution of Use:	This product contains ProClin: a POISONOUS AND HAZARDOUS SUBSTANCE, which should be handled by trained staff only.

Handling

Storage:	4 °C,-20 °C
Storage Comment:	Shipped at 4°C. Store at -20°C for one year. Avoid repeated freeze/thaw cycles.
Expiry Date:	12 months

Images

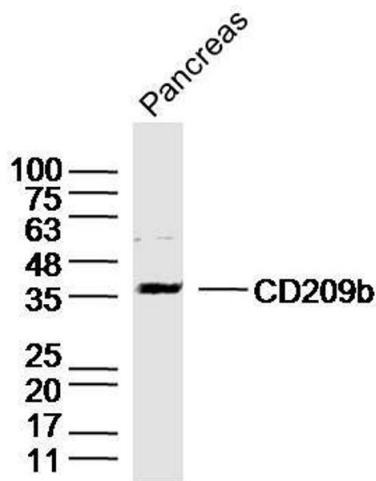


Image 1. Pancreas lysates probed with DC-SIGNR1/CD209b Polyclonal Antibody, Unconjugated at 1:300 dilution and 4°C overnight incubation. Followed by conjugated secondary antibody incubation at 1:10000 for 60 min at 37°C.