

Datasheet for ABIN5675472
anti-PEDF antibody (AA 101-200)[Go to Product page](#)

1 Image

Overview

Quantity:	100 µL
Target:	PEDF (SERPINF1)
Binding Specificity:	AA 101-200
Reactivity:	Human, Mouse
Host:	Rabbit
Clonality:	Polyclonal
Conjugate:	This PEDF antibody is un-conjugated
Application:	Western Blotting (WB), ELISA, Immunocytochemistry (ICC), Immunofluorescence (Cultured Cells) (IF (cc)), Immunofluorescence (Paraffin-embedded Sections) (IF (p)), Immunohistochemistry (Paraffin-embedded Sections) (IHC (p)), Immunohistochemistry (Frozen Sections) (IHC (fro))

Product Details

Immunogen:	KLH conjugated synthetic peptide derived from human PEDF
Isotype:	IgG
Cross-Reactivity:	Human, Mouse
Predicted Reactivity:	Cow, Sheep, Pig
Purification:	Purified by Protein A.

Target Details

Target:	PEDF (SERPINF1)
---------	-----------------

Target Details

Alternative Name:	PEDF (SERPINF1 Products)
Background:	<p>Synonyms: pigment epithelium-derived factor, Serpin-F1, Stromal cell-derived factor 3, SDF-3, Caspin, Alpha 2 antiplasmin, EPC 1, EPC1, PIG 35, PIG35, Pigment epithelium derived factor, Proliferation inducing protein 35, SERPIN F1, Serpin peptidase inhibitor clade F member 1, SERPINF 1, SERPINF1, PEDF_HUMAN</p> <p>Background: Pigment epithelium derived factor, originally identified in conditioned medium of cultured human fetal retinal pigment epithelial (RPE) cells, is a neurotrophic protein that induces extensive neuronal differentiation in human Y79 retinoblastoma cells, a neoplastic counterpart of normal retinoblasts. It has been suggested that PEDF is synthesized by RPE cells and secreted into the retina interphotoreceptor matrix where it may influence development/differentiation of the neural retina. PEDF is a potent inhibitor of angiogenesis. As it does not undergo the S (stressed) to R (relaxed) conformational transition characteristic of active serpins, it exhibits no serine protease inhibitory activity. The PEDF gene is a member of the serpin gene family. Serpins are a group of serine protease inhibitors, some of which have also been reported to exhibit neurotrophic activity.</p>

Gene ID: 5176

UniProt: [P36955](#)

Application Details

Application Notes:	WB 1:300-5000
	ELISA 1:500-1000
	IHC-P 1:200-400
	IHC-F 1:100-500
	IF(IHC-P) 1:50-200
	IF(IHC-F) 1:50-200
	IF(ICC) 1:50-200
	ICC 1:100-500

Restrictions: For Research Use only

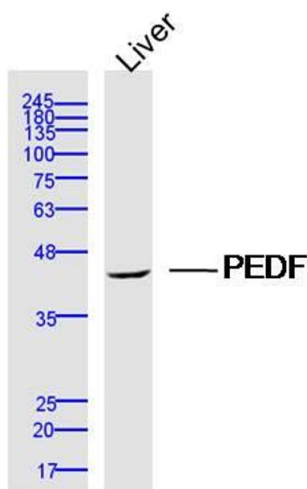
Handling

Format:	Liquid
Concentration:	1 µg/µL
Buffer:	0.01M TBS(pH 7.4) with 1 % BSA, 0.02 % Proclin300 and 50 % Glycerol.

Handling

Preservative:	ProClin
Precaution of Use:	This product contains ProClin: a POISONOUS AND HAZARDOUS SUBSTANCE, which should be handled by trained staff only.
Storage:	4 °C,-20 °C
Storage Comment:	Shipped at 4°C. Store at -20°C for one year. Avoid repeated freeze/thaw cycles.
Expiry Date:	12 months

Images



Western Blotting

Image 1. Mouse Liver lysates probed with PEDF Polyclonal Antibody, Unconjugated at 1:300 dilution and 4°C overnight incubation. Followed by conjugated secondary antibody incubation at 1:10000 for 60 min at 37°C.