



Datasheet for ABIN5675475
anti-TBCE antibody (AA 1-100)



[Go to Product page](#)

1 Image

Overview

Quantity:	100 µL
Target:	TBCE
Binding Specificity:	AA 1-100
Reactivity:	Mouse, Rat
Host:	Rabbit
Clonality:	Polyclonal
Conjugate:	This TBCE antibody is un-conjugated
Application:	Western Blotting (WB), ELISA, Immunofluorescence (Cultured Cells) (IF (cc)), Immunofluorescence (Paraffin-embedded Sections) (IF (p)), Immunohistochemistry (Frozen Sections) (IHC (fro)), Immunohistochemistry (Paraffin-embedded Sections) (IHC (p)), Immunocytochemistry (ICC)

Product Details

Immunogen:	KLH conjugated synthetic peptide derived from human TBCE
Isotype:	IgG
Cross-Reactivity:	Mouse, Rat
Predicted Reactivity:	Human,Dog,Cow,Rabbit
Purification:	Purified by Protein A.

Target Details

Target:	TBCE
---------	------

Target Details

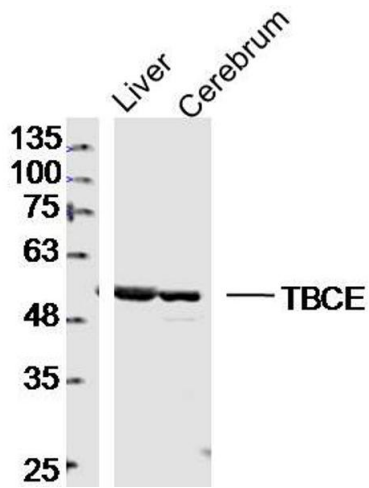
Alternative Name:	TBCE (TBCE Products)
Background:	Synonyms: Tubulin-specific chaperone E, TBCE, Tubulin-specific chaperone E, Tubulin-folding cofactor E, TBCE Background: Tubulin-folding protein, involved in the second step of the tubulin folding pathway. Seems to be implicated in the maintenance of the neuronal microtubule network. Involved in regulation of tubulin heterodimer dissociation.
Gene ID:	6905
UniProt:	Q15813

Application Details

Application Notes:	WB 1:300-5000 ELISA 1:500-1000 IHC-P 1:200-400 IHC-F 1:100-500 IF(IHC-P) 1:50-200 IF(IHC-F) 1:50-200 IF(ICC) 1:50-200 ICC 1:100-500
Restrictions:	For Research Use only

Handling

Format:	Liquid
Concentration:	1 µg/µL
Buffer:	0.01M TBS(pH 7.4) with 1 % BSA, 0.02 % Proclin300 and 50 % Glycerol.
Preservative:	ProClin
Precaution of Use:	This product contains ProClin: a POISONOUS AND HAZARDOUS SUBSTANCE, which should be handled by trained staff only.
Storage:	4 °C,-20 °C
Storage Comment:	Shipped at 4°C. Store at -20°C for one year. Avoid repeated freeze/thaw cycles.
Expiry Date:	12 months



Western Blotting

Image 1. Lane 1: mouse liver lysates Lane 2: mouse cerebrum lysates probed with TBCE Polyclonal Antibody, Unconjugated at 1:300 dilution and 4°C overnight incubation. Followed by conjugated secondary antibody incubation at 1:10000 for 60 min at 37°C.