

Datasheet for ABIN5675519  
**anti-ERO1L antibody (AA 321-420)**[Go to Product page](#)

## 1 Image

## Overview

Quantity:	100 µL
Target:	ERO1L
Binding Specificity:	AA 321-420
Reactivity:	Human
Host:	Rabbit
Clonality:	Polyclonal
Conjugate:	This ERO1L antibody is un-conjugated
Application:	Western Blotting (WB), ELISA, Flow Cytometry (FACS)

## Product Details

Immunogen:	KLH conjugated synthetic peptide derived from human ERO1L
Isotype:	IgG
Cross-Reactivity:	Human
Predicted Reactivity:	Mouse,Rat,Rabbit
Purification:	Purified by Protein A.

## Target Details

Target:	ERO1L
Alternative Name:	ERO1L ( <a href="#">ERO1L Products</a> )
Background:	Synonyms: ERO1-like protein alpha, ERO1A, ERO1-L, ERO1-L-alpha, Endoplasmic oxidoreductin-

## Target Details

1-like protein, Endoplasmic reticulum oxidoreductase alpha, Oxidoreductin-1-L-alpha, ERO1L

Background: Oxidoreductase involved in disulfide bond formation in the endoplasmic reticulum. Efficiently reoxidizes P4HB/PDI, the enzyme catalyzing protein disulfide formation, in order to allow P4HB to sustain additional rounds of disulfide formation. Following P4HB reoxidation, passes its electrons to molecular oxygen via FAD, leading to the production of reactive oxygen species (ROS) in the cell. Required for the proper folding of immunoglobulins. Involved in the release of the unfolded cholera toxin from reduced P4HB/PDI in case of infection by *V.cholerae*, thereby playing a role in retrotranslocation of the toxin. Plays an important role in ER stress-induced, CHOP-dependent apoptosis by activating the inositol 1,4,5-trisphosphate receptor IP3R1.

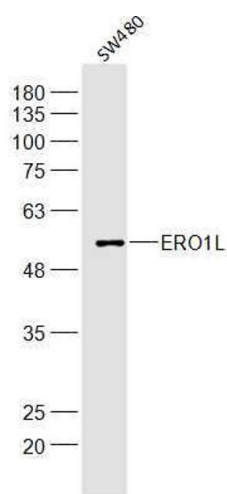
Gene ID:	30001
UniProt:	<a href="#">Q96HE7</a>
Pathways:	<a href="#">Peptide Hormone Metabolism</a> , <a href="#">ER-Nucleus Signaling</a> , <a href="#">Brown Fat Cell Differentiation</a>

## Application Details

Application Notes:	WB 1:300-5000 ELISA 1:500-1000 FCM 1:20-100
Restrictions:	For Research Use only

## Handling

Format:	Liquid
Concentration:	1 µg/µL
Buffer:	0.01M TBS( pH 7.4) with 1 % BSA, 0.02 % Proclin300 and 50 % Glycerol.
Preservative:	ProClin
Precaution of Use:	This product contains ProClin: a POISONOUS AND HAZARDOUS SUBSTANCE, which should be handled by trained staff only.
Storage:	4 °C,-20 °C
Storage Comment:	Shipped at 4°C. Store at -20°C for one year. Avoid repeated freeze/thaw cycles.
Expiry Date:	12 months



Western Blotting

**Image 1.** SW480 lysates probed with ERO1L Polyclonal Antibody, Unconjugated at 1:300 dilution and 4°C overnight incubation. Followed by conjugated secondary antibody incubation at 1:10000 for 60 min at 37°C.