

Datasheet for ABIN5675539  
**anti-KPNA6 antibody (AA 101-200)**[Go to Product page](#)

## 1 Image

## Overview

Quantity:	100 µL
Target:	KPNA6
Binding Specificity:	AA 101-200
Reactivity:	Human, Mouse
Host:	Rabbit
Clonality:	Polyclonal
Conjugate:	This KPNA6 antibody is un-conjugated
Application:	Western Blotting (WB), ELISA, Immunofluorescence (Paraffin-embedded Sections) (IF (p)), Immunohistochemistry (Paraffin-embedded Sections) (IHC (p)), Immunohistochemistry (Frozen Sections) (IHC (fro))

## Product Details

Immunogen:	KLH conjugated synthetic peptide derived from human KPNA6
Isotype:	IgG
Cross-Reactivity:	Human, Mouse
Predicted Reactivity:	Rat,Cow,Sheep,Pig,Horse,Chicken
Purification:	Purified by Protein A.

## Target Details

Target:	KPNA6
---------	-------

## Target Details

Alternative Name: KPNA6 ([KPNA6 Products](#))

Background: Synonyms: Importin subunit alpha-7, KPNA6, Karyopherin subunit alpha-6, KPNA6, IPOA7  
Background: Functions in nuclear protein import as an adapter protein for nuclear receptor KPNB1. Binds specifically and directly to substrates containing either a simple or bipartite NLS motif. Docking of the importin/substrate complex to the nuclear pore complex (NPC) is mediated by KPNB1 through binding to nucleoporin FxFG repeats and the complex is subsequently translocated through the pore by an energy requiring, Ran-dependent mechanism. At the nucleoplasmic side of the NPC, Ran binds to importin-beta and the three components separate and importin-alpha and -beta are re-exported from the nucleus to the cytoplasm where GTP hydrolysis releases Ran from importin. The directionality of nuclear import is thought to be conferred by an asymmetric distribution of the GTP- and GDP-bound forms of Ran between the cytoplasm and nucleus.

Gene ID: 23633

UniProt: [O60684](#)

Pathways: [Protein targeting to Nucleus](#)

## Application Details

Application Notes: WB 1:300-1000  
ELISA 1:500-1000  
IHC-P 1:200-400  
IHC-F 1:100-500  
IF(IHC-P) 1:50-200  
IF(IHC-F) 1:50-200  
IF(ICC) 1:50-200  
ICC 1:100-500

Restrictions: For Research Use only

## Handling

Concentration: 1 µg/µL

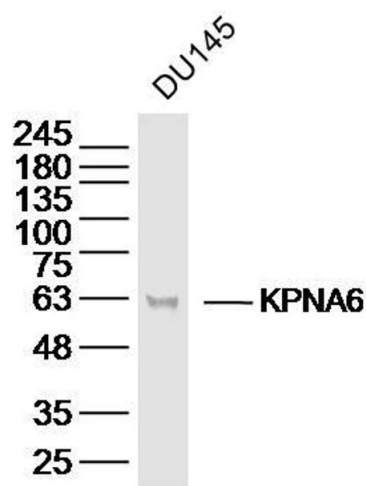
Buffer: Aqueous buffered solution containing 0.01M TBS ( pH 7.4) with 1 % BSA, 0.02 % Proclin300 and 50 % Glycerol.

Preservative: ProClin

Handling

Precaution of Use:	This product contains ProClin: a POISONOUS AND HAZARDOUS SUBSTANCE which should be handled by trained staff only.
Storage:	-20 °C
Storage Comment:	Store at -20°C for 12 months.
Expiry Date:	12 months

Images



**Image 1.** DU145 lysates probed with KPNA6 Polyclonal Antibody, Unconjugated at 1:300 dilution and 4°C overnight incubation. Followed by conjugated secondary antibody incubation at 1:10000 for 60 min at 37°C.