

Datasheet for ABIN5675546
anti-KLHDC8B antibody (AA 201-300)[Go to Product page](#)

1 Image

Overview

Quantity:	100 µL
Target:	KLHDC8B
Binding Specificity:	AA 201-300
Reactivity:	Human
Host:	Rabbit
Clonality:	Polyclonal
Conjugate:	This KLHDC8B antibody is un-conjugated
Application:	Western Blotting (WB), ELISA, Immunofluorescence (Cultured Cells) (IF (cc)), Immunofluorescence (Paraffin-embedded Sections) (IF (p)), Immunohistochemistry (Paraffin- embedded Sections) (IHC (p)), Immunohistochemistry (Frozen Sections) (IHC (fro)), Immunocytochemistry (ICC)

Product Details

Immunogen:	KLH conjugated synthetic peptide derived from human KLHDC8B
Isotype:	IgG
Cross-Reactivity:	Human
Predicted Reactivity:	Mouse,Rat,Dog,Cow,Sheep,Rabbit
Purification:	Purified by Protein A.

Target Details

Target:	KLHDC8B
---------	---------

Target Details

Alternative Name:	KLHDC8B (KLHDC8B Products)
Background:	<p>Synonyms: FLJ11302, FP17659, Kelch domain containing 8B, Kelch domain containing protein 8B, Kelch domain-containing protein 8B, KLD8B_HUMAN, Klhdc8b, MGC35097, MGC94736.</p> <p>Background: Involved in pinching off the separated nuclei at the cleavage furrow and in cytokinesis (PubMed:20107318). Required for mitotic integrity and maintenance of chromosomal stability. Protects cells against mitotic errors, centrosomal amplification, micronucleus formation and aneuploidy. Plays a key role of midbody function involving abscission of the daughter cells during cytokinesis and appropriate chromosomal and nuclear segregation into the daughter cells (PubMed:22988245, PubMed:23713010).</p>

Gene ID: 200942

UniProt: [Q8IXV7](#)

Application Details

Application Notes:	WB 1:300-5000
	ELISA 1:500-1000
	IHC-P 1:200-400
	IHC-F 1:100-500
	IF(IHC-P) 1:50-200
	IF(IHC-F) 1:50-200
	IF(ICC) 1:50-200
	ICC 1:100-500

Restrictions: For Research Use only

Handling

Format:	Liquid
Concentration:	1 µg/µL
Buffer:	0.01M TBS(pH 7.4) with 1 % BSA, 0.02 % Proclin300 and 50 % Glycerol.
Preservative:	ProClin
Precaution of Use:	This product contains ProClin: a POISONOUS AND HAZARDOUS SUBSTANCE, which should be handled by trained staff only.
Storage:	4 °C,-20 °C

Handling

Storage Comment:	Shipped at 4°C. Store at -20°C for one year. Avoid repeated freeze/thaw cycles.
Expiry Date:	12 months

Images

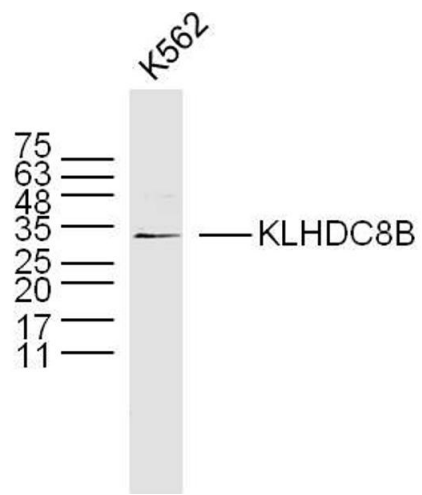


Image 1. K562 lysates probed with KLHDC8B Polyclonal Antibody, Unconjugated at 1:300 dilution and 4°C overnight incubation. Followed by conjugated secondary antibody incubation at 1:10000 for 60 min at 37°C.