



Datasheet for ABIN5675552
anti-TGFB2 antibody (AA 351-414)



[Go to Product page](#)

1 Image

Overview

Quantity:	100 µL
Target:	TGFB2
Binding Specificity:	AA 351-414
Reactivity:	Human, Mouse
Host:	Rabbit
Clonality:	Polyclonal
Conjugate:	This TGFB2 antibody is un-conjugated
Application:	Western Blotting (WB), ELISA, Immunocytochemistry (ICC), Immunofluorescence (Cultured Cells) (IF (cc)), Immunofluorescence (Paraffin-embedded Sections) (IF (p)), Immunohistochemistry (Frozen Sections) (IHC (fro))

Product Details

Immunogen:	KLH conjugated synthetic peptide derived from human TGF beta 2
Isotype:	IgG
Cross-Reactivity:	Human, Mouse
Predicted Reactivity:	Rat
Purification:	Purified by Protein A.

Target Details

Target:	TGFB2
---------	-------

Target Details

Alternative Name:	TGF beta 2 (TGFB2 Products)
Background:	Synonyms: Transforming growth factor beta-2, TGFB2, TGF-beta-2, BSC-1 cell growth inhibitor, Cetermin, Glioblastoma-derived T-cell suppressor factor, G-TSF, Polyergin, TGFB2 Background: TGF-beta 2 has suppressive effects on interleukin-2 dependent T-cell growth.
Gene ID:	7042
UniProt:	P61812
Pathways:	Cell-Cell Junction Organization , Production of Molecular Mediator of Immune Response , Protein targeting to Nucleus

Application Details

Application Notes:	WB 1:300-5000 ELISA 1:500-1000 IHC-F 1:100-500 IF(IHC-P) 1:50-200 IF(IHC-F) 1:50-200 IF(ICC) 1:50-200 ICC 1:100-500
Restrictions:	For Research Use only

Handling

Format:	Liquid
Concentration:	1 µg/µL
Buffer:	0.01M TBS(pH 7.4) with 1 % BSA, 0.02 % Proclin300 and 50 % Glycerol.
Preservative:	ProClin
Precaution of Use:	This product contains ProClin: a POISONOUS AND HAZARDOUS SUBSTANCE, which should be handled by trained staff only.
Storage:	4 °C,-20 °C
Storage Comment:	Shipped at 4°C. Store at -20°C for one year. Avoid repeated freeze/thaw cycles.
Expiry Date:	12 months

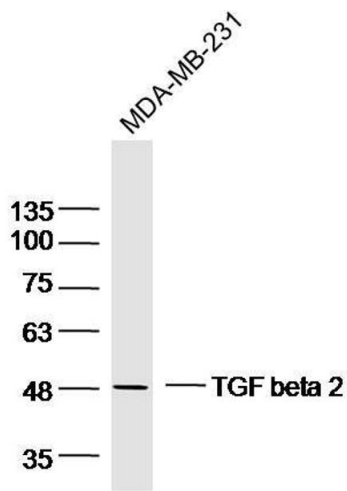


Image 1. MDA-MB-231 lysates probed with TGF beta 2 Polyclonal Antibody, Unconjugated at 1:300 dilution and 4°C overnight incubation. Followed by conjugated secondary antibody incubation at 1:10000 for 60 min at 37°C.