

Datasheet for ABIN5675564  
**anti-IMPACT antibody (AA 21-120)**[Go to Product page](#)

## 1 Image

## Overview

Quantity:	100 µL
Target:	IMPACT
Binding Specificity:	AA 21-120
Reactivity:	Mouse, Rat
Host:	Rabbit
Clonality:	Polyclonal
Conjugate:	This IMPACT antibody is un-conjugated
Application:	Western Blotting (WB), ELISA, Immunofluorescence (Cultured Cells) (IF (cc)), Immunofluorescence (Paraffin-embedded Sections) (IF (p)), Immunohistochemistry (Frozen Sections) (IHC (fro)), Immunohistochemistry (Paraffin-embedded Sections) (IHC (p)), Immunocytochemistry (ICC)

## Product Details

Immunogen:	KLH conjugated synthetic peptide derived from human IMPACT
Isotype:	IgG
Cross-Reactivity:	Mouse, Rat
Predicted Reactivity:	Human,Dog,Cow,Sheep,Rabbit
Purification:	Purified by Protein A.

## Target Details

Target:	IMPACT
---------	--------

## Target Details

Alternative Name:	IMPACT ( <a href="#">IMPACT Products</a> )
Background:	<p>Synonyms: Protein IMPACT, IMPACT, Imprinted and ancient gene protein homolog</p> <p>Background: Translational regulator that ensures constant high levels of translation under amino acid starvation. Acts by interacting with GCN1/GCN1L1, thereby preventing activation of GCN2 protein kinases (EIF2AK1 to 4) and subsequent down-regulation of protein synthesis (By similarity). May be required to regulate translation in specific neuronal cells under amino acid starvation conditions by preventing GCN2 activation and therefore ATF4 synthesis (By similarity). Through its action on GCN2, may also facilitate neuritogenesis (By similarity).</p>
Gene ID:	55364
UniProt:	<a href="#">Q9P2X3</a>

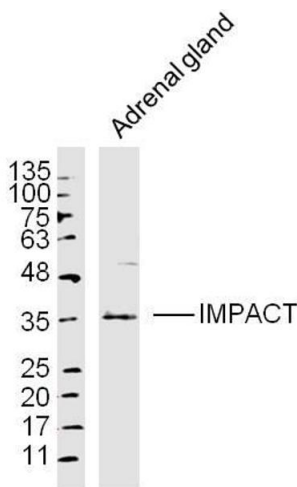
## Application Details

Application Notes:	<p>WB 1:300-5000</p> <p>ELISA 1:500-1000</p> <p>IHC-P 1:200-400</p> <p>IHC-F 1:100-500</p> <p>IF(IHC-P) 1:50-200</p> <p>IF(IHC-F) 1:50-200</p> <p>IF(ICC) 1:50-200</p> <p>ICC 1:100-500</p>
Restrictions:	For Research Use only

## Handling

Format:	Liquid
Concentration:	1 µg/µL
Buffer:	0.01M TBS( pH 7.4) with 1 % BSA, 0.02 % Proclin300 and 50 % Glycerol.
Preservative:	ProClin
Precaution of Use:	This product contains ProClin: a POISONOUS AND HAZARDOUS SUBSTANCE, which should be handled by trained staff only.
Storage:	4 °C,-20 °C
Storage Comment:	Shipped at 4°C. Store at -20°C for one year. Avoid repeated freeze/thaw cycles.

Expiry Date: 12 months



**Image 1.** Adrenal gland lysates probed with IMPACT Polyclonal Antibody, Unconjugated at 1:300 dilution and 4°C overnight incubation. Followed by conjugated secondary antibody incubation at 1:10000 for 60 min at 37°C.