

Datasheet for ABIN5675594  
**anti-FGD3 antibody (AA 501-600)**[Go to Product page](#)

## 1 Image

## Overview

Quantity:	100 µL
Target:	FGD3
Binding Specificity:	AA 501-600
Reactivity:	Human
Host:	Rabbit
Clonality:	Polyclonal
Conjugate:	This FGD3 antibody is un-conjugated
Application:	Western Blotting (WB), ELISA, Immunofluorescence (Cultured Cells) (IF (cc)), Immunofluorescence (Paraffin-embedded Sections) (IF (p)), Immunohistochemistry (Frozen Sections) (IHC (fro)), Immunohistochemistry (Paraffin-embedded Sections) (IHC (p)), Immunocytochemistry (ICC)

## Product Details

Immunogen:	KLH conjugated synthetic peptide derived from human FGD3
Isotype:	IgG
Cross-Reactivity:	Human
Predicted Reactivity:	Mouse,Rat
Purification:	Purified by Protein A.

## Target Details

Target:	FGD3
---------	------

## Target Details

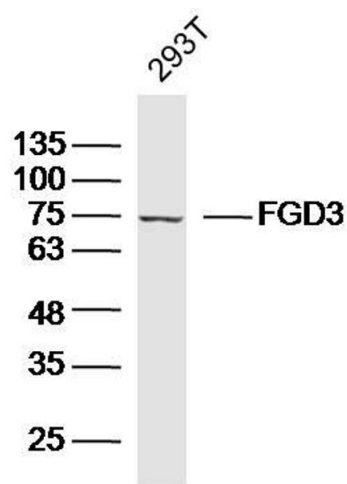
Alternative Name:	FGD3 ( <a href="#">FGD3 Products</a> )
Background:	<p>Synonyms: FYVE, RhoGEF and PH domain-containing protein 3, FGD3, Zinc finger FYVE domain-containing protein 5, ZFYVE5</p> <p>Background: Promotes the formation of filopodia. May activate CDC42, a member of the Ras-like family of Rho- and Rac proteins, by exchanging bound GDP for free GTP. Plays a role in regulating the actin cytoskeleton and cell shape.</p>
Gene ID:	89846
UniProt:	<a href="#">Q5JSP0</a>

## Application Details

Application Notes:	<p>WB 1:300-5000</p> <p>ELISA 1:500-1000</p> <p>IHC-P 1:200-400</p> <p>IHC-F 1:100-500</p> <p>IF(IHC-P) 1:50-200</p> <p>IF(IHC-F) 1:50-200</p> <p>IF(ICC) 1:50-200</p> <p>ICC 1:100-500</p>
Restrictions:	For Research Use only

## Handling

Format:	Liquid
Concentration:	1 µg/µL
Buffer:	0.01M TBS( pH 7.4) with 1 % BSA, 0.02 % Proclin300 and 50 % Glycerol.
Preservative:	ProClin
Precaution of Use:	This product contains ProClin: a POISONOUS AND HAZARDOUS SUBSTANCE, which should be handled by trained staff only.
Storage:	4 °C,-20 °C
Storage Comment:	Shipped at 4°C. Store at -20°C for one year. Avoid repeated freeze/thaw cycles.
Expiry Date:	12 months



**Image 1.** 293T lysates probed with FGD3 Polyclonal Antibody, Unconjugated at 1:300 dilution and 4°C overnight incubation. Followed by conjugated secondary antibody incubation at 1:10000 for 60 min at 37°C.