

Datasheet for ABIN5675610
anti-MAGI3 antibody (AA 181-280)[Go to Product page](#)

1 Image

Overview

Quantity:	100 µL
Target:	MAGI3
Binding Specificity:	AA 181-280
Reactivity:	Mouse
Host:	Rabbit
Clonality:	Polyclonal
Conjugate:	This MAGI3 antibody is un-conjugated
Application:	Western Blotting (WB), Immunofluorescence (Cultured Cells) (IF (cc)), Immunofluorescence (Paraffin-embedded Sections) (IF (p)), ELISA, Immunohistochemistry (Paraffin-embedded Sections) (IHC (p)), Immunohistochemistry (Frozen Sections) (IHC (fro)), Immunocytochemistry (ICC)

Product Details

Immunogen:	KLH conjugated synthetic peptide derived from human MAGI3
Isotype:	IgG
Cross-Reactivity:	Mouse
Predicted Reactivity:	Human,Rat,Dog,Cow,Sheep,Pig,Chicken,Rabbit
Purification:	Purified by Protein A.

Target Details

Target:	MAGI3
---------	-------

Target Details

Alternative Name:	MAGI3 (MAGI3 Products)
Background:	<p>Synonyms: dJ730K3.2, MAGI-3, magi3, MAGI3_HUMAN, Membrane Associated Guanylate kinase Related 3, Membrane-associated guanylate kinase, Membrane-associated guanylate kinase inverted 3, RP4-730K3.1, SLIPR, WW and PDZ domain-containing protein 3</p> <p>Background: Acts as a scaffolding protein at cell-cell junctions, thereby regulating various cellular and signaling processes. Cooperates with PTEN to modulate the kinase activity of AKT1. Its interaction with PTPRB and tyrosine phosphorylated proteins suggests that it may link receptor tyrosine phosphatase with its substrates at the plasma membrane. In polarized epithelial cells, involved in efficient trafficking of TGFA to the cell surface. Regulates the ability of LPAR2 to activate ERK and RhoA pathways. Regulates the JNK signaling cascade via its interaction with FZD4 and VANGL2.</p>
Gene ID:	260425
UniProt:	Q5TCQ9

Application Details

Application Notes:	WB 1:300-5000 ELISA 1:500-1000 IHC-P 1:200-400 IHC-F 1:100-500 IF(IHC-P) 1:50-200 IF(IHC-F) 1:50-200 IF(ICC) 1:50-200 ICC 1:100-500
Restrictions:	For Research Use only

Handling

Format:	Liquid
Concentration:	1 µg/µL
Buffer:	0.01M TBS(pH 7.4) with 1 % BSA, 0.02 % Proclin300 and 50 % Glycerol.
Preservative:	ProClin
Precaution of Use:	This product contains ProClin: a POISONOUS AND HAZARDOUS SUBSTANCE, which should be handled by trained staff only.

Handling

Storage:	4 °C,-20 °C
Storage Comment:	Shipped at 4°C. Store at -20°C for one year. Avoid repeated freeze/thaw cycles.
Expiry Date:	12 months

Images

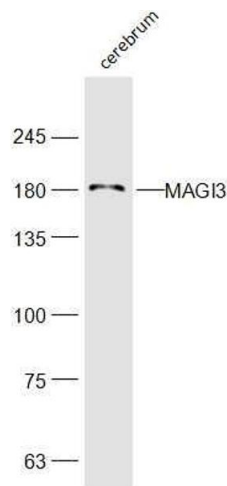


Image 1. Mouse cerebrum lysates probed with MAGI3 Polyclonal Antibody, Unconjugated at 1:300 dilution and 4°C overnight incubation. Followed by conjugated secondary antibody incubation at 1:10000 for 60 min at 37°C.