

Datasheet for ABIN5675630  
**anti-SHC4 antibody (AA 451-550)**[Go to Product page](#)

## 1 Image

## Overview

Quantity:	100 µL
Target:	SHC4
Binding Specificity:	AA 451-550
Reactivity:	Mouse
Host:	Rabbit
Clonality:	Polyclonal
Conjugate:	This SHC4 antibody is un-conjugated
Application:	Western Blotting (WB), ELISA

## Product Details

Immunogen:	KLH conjugated synthetic peptide derived from human SHC4
Isotype:	IgG
Cross-Reactivity:	Mouse
Predicted Reactivity:	Human,Rat,Dog,Horse
Purification:	Purified by Protein A.

## Target Details

Target:	SHC4
Alternative Name:	SHC4 ( <a href="#">SHC4 Products</a> )
Background:	Synonyms: hShcD, MGC34023, Rai like protein, Rai-like protein, RaLP, SH2 domain protein C4,

## Target Details

SHC (Src homology 2 domain containing) family member 4, SHC 4, SHC, SHC family member 4, SHC transforming protein 4, SHC transforming protein D, SHC-transforming protein 4, SHC-transforming protein D, Shc4, SHC4\_HUMAN, SHCD, Src homology 2 domain containing family member 4, Src homology 2 domain containing transforming protein C4, Src homology 2 domain-containing-transforming protein C4.

Background: Activates both Ras-dependent and Ras-independent migratory pathways in melanomas. Contributes to the early phases of agrin-induced tyrosine phosphorylation of CHRNA1.

Gene ID: 399694

UniProt: [Q6S5L8](#)

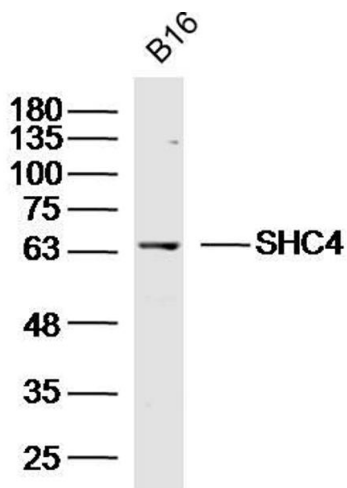
## Application Details

Application Notes: WB 1:300-5000  
ELISA 1:500-1000

Restrictions: For Research Use only

## Handling

Format:	Liquid
Concentration:	1 µg/µL
Buffer:	0.01M TBS( pH 7.4) with 1 % BSA, 0.02 % Proclin300 and 50 % Glycerol.
Preservative:	ProClin
Precaution of Use:	This product contains ProClin: a POISONOUS AND HAZARDOUS SUBSTANCE, which should be handled by trained staff only.
Storage:	4 °C,-20 °C
Storage Comment:	Shipped at 4°C. Store at -20°C for one year. Avoid repeated freeze/thaw cycles.
Expiry Date:	12 months



**Image 1.** B16 lysates probed with SHC4 Polyclonal Antibody, Unconjugated at 1:300 dilution and 4°C overnight incubation. Followed by conjugated secondary antibody incubation at 1:10000 for 60 min at 37°C.