



[Go to Product page](#)

Datasheet for ABIN5675633  
**anti-SHMT1 antibody (AA 301-400)**

1 Image

### Overview

Quantity:	100 µL
Target:	SHMT1
Binding Specificity:	AA 301-400
Reactivity:	Human
Host:	Rabbit
Clonality:	Polyclonal
Conjugate:	This SHMT1 antibody is un-conjugated
Application:	Western Blotting (WB), ELISA, Immunofluorescence (Cultured Cells) (IF (cc)), Immunofluorescence (Paraffin-embedded Sections) (IF (p)), Immunohistochemistry (Paraffin-embedded Sections) (IHC (p)), Immunohistochemistry (Frozen Sections) (IHC (fro)), Immunocytochemistry (ICC)

### Product Details

Immunogen:	KLH conjugated synthetic peptide derived from human SHMT1
Isotype:	IgG
Cross-Reactivity:	Human
Predicted Reactivity:	Mouse,Rat,Rabbit
Purification:	Purified by Protein A.

### Target Details

Target:	SHMT1
---------	-------

## Target Details

---

Alternative Name:	SHMT1 ( <a href="#">SHMT1 Products</a> )
Background:	Synonyms: Serine hydroxymethyltransferase, cytosolic, SHMT1, SHMT, Glycine hydroxymethyltransferase, Serine methylase Background: Interconversion of serine and glycine.
Gene ID:	6470
UniProt:	<a href="#">P34896</a>

## Application Details

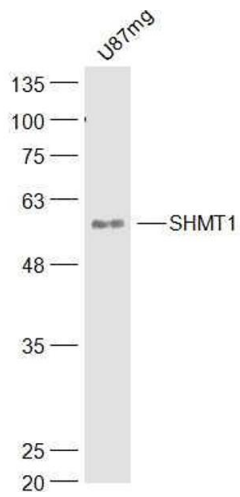
---

Application Notes:	WB 1:300-5000 ELISA 1:500-1000 IHC-P 1:200-400 IHC-F 1:100-500 IF(IHC-P) 1:50-200 IF(IHC-F) 1:50-200 IF(ICC) 1:50-200 ICC 1:100-500
Restrictions:	For Research Use only

## Handling

---

Format:	Liquid
Concentration:	1 µg/µL
Buffer:	0.01M TBS( pH 7.4) with 1 % BSA, 0.02 % Proclin300 and 50 % Glycerol.
Preservative:	ProClin
Precaution of Use:	This product contains ProClin: a POISONOUS AND HAZARDOUS SUBSTANCE, which should be handled by trained staff only.
Storage:	4 °C,-20 °C
Storage Comment:	Shipped at 4°C. Store at -20°C for one year. Avoid repeated freeze/thaw cycles.
Expiry Date:	12 months



### Western Blotting

**Image 1.** U87MG lysates probed with SHMT1 Polyclonal Antibody, Unconjugated at 1:300 dilution and 4°C overnight incubation. Followed by conjugated secondary antibody incubation at 1:10000 for 60 min at 37°C.