

Datasheet for ABIN5675671

anti-RAB11FIP2 antibody (AA 331-430)[Go to Product page](#)**1** Image

Overview

Quantity:	100 µL
Target:	RAB11FIP2
Binding Specificity:	AA 331-430
Reactivity:	Human, Mouse
Host:	Rabbit
Clonality:	Polyclonal
Conjugate:	This RAB11FIP2 antibody is un-conjugated
Application:	Western Blotting (WB), ELISA

Product Details

Immunogen:	KLH conjugated synthetic peptide derived from human RAB11-FIP2
Isotype:	IgG
Cross-Reactivity:	Human, Mouse
Predicted Reactivity:	Rat,Dog,Cow,Pig,Horse,Chicken,Cat,Rabbit,Guinea Pig
Purification:	Purified by Protein A.

Target Details

Target:	RAB11FIP2
Alternative Name:	RAB11-FIP2 (RAB11FIP2 Products)
Background:	Synonyms: RAB11FIP2,KIAA0941, NRip11, RAB11 family interacting protein 2 (class I), Rab11

Target Details

family-interacting protein 2, RAB11 FIP2 long isoform, Rab11-FIP2, RFIP2, RFIP2_HUMAN.

Background: A Rab11 effector binding preferentially phosphatidylinositol 3,4,5-trisphosphate (PtdInsP3) and phosphatidic acid (PA) and acting in the regulation of the transport of vesicles from the endosomal recycling compartment (ERC) to the plasma membrane. Involved in insulin granule exocytosis. Also involved in receptor-mediated endocytosis and membrane trafficking of recycling endosomes, probably originating from clathrin-coated vesicles. Required in a complex with MYO5B and RAB11 for the transport of NPC1L1 to the plasma membrane. Also acts as a regulator of cell polarity.

Gene ID:	22841
UniProt:	Q7L804
Pathways:	Hormone Transport , Carbohydrate Homeostasis

Application Details

Application Notes:	WB 1:300-5000 ELISA 1:500-1000
Restrictions:	For Research Use only

Handling

Format:	Liquid
Concentration:	1 µg/µL
Buffer:	0.01M TBS(pH 7.4) with 1 % BSA, 0.02 % Proclin300 and 50 % Glycerol.
Preservative:	ProClin
Precaution of Use:	This product contains ProClin: a POISONOUS AND HAZARDOUS SUBSTANCE, which should be handled by trained staff only.
Storage:	4 °C,-20 °C
Storage Comment:	Shipped at 4°C. Store at -20°C for one year. Avoid repeated freeze/thaw cycles.
Expiry Date:	12 months

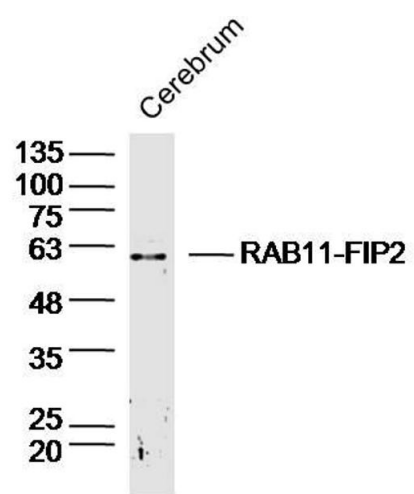


Image 1. Mouse cerebrum lysates probed with RAB11-FIP2 Polyclonal Antibody, Unconjugated at 1:300 dilution and 4°C overnight incubation. Followed by conjugated secondary antibody incubation at 1:10000 for 60 min at 37°C.