



[Go to Product page](#)

Datasheet for ABIN5675686

## anti-Leprecan-Like 4 antibody (AA 1-100)

### 1 Image

#### Overview

Quantity:	100 µL
Target:	Leprecan-Like 4 (LEPREL4)
Binding Specificity:	AA 1-100
Reactivity:	Rat, Macaque
Host:	Rabbit
Clonality:	Polyclonal
Conjugate:	This Leprecan-Like 4 antibody is un-conjugated
Application:	Western Blotting (WB), ELISA, Immunofluorescence (Cultured Cells) (IF (cc)), Immunofluorescence (Paraffin-embedded Sections) (IF (p)), Immunohistochemistry (Frozen Sections) (IHC (fro)), Immunohistochemistry (Paraffin-embedded Sections) (IHC (p)), Immunocytochemistry (ICC)

#### Product Details

Immunogen:	KLH conjugated synthetic peptide derived from human SC65
Isotype:	IgG
Cross-Reactivity:	Macaque, Rat
Predicted Reactivity:	Human, Mouse, Dog, Pig
Purification:	Purified by Protein A.

#### Target Details

Target:	Leprecan-Like 4 (LEPREL4)
---------	---------------------------

## Target Details

---

Alternative Name: SC65 ([LEPREL4 Products](#))

---

Background: Synonyms: Leprecan-like protein 4, Leprel4, NOL55, Nucleolar autoantigen 55 kDa, Nucleolar autoantigen No55, SC 65, SC65\_HUMAN, Synaptonemal complex protein SC65.  
Background: Part of a complex composed of PLOD1, P3H3 and P3H4 that catalyzes hydroxylation of lysine residues in collagen alpha chains and is required for normal assembly and cross-linking of collagen fibrils. Required for normal bone density and normal skin stability via its role in hydroxylation of lysine residues in collagen alpha chains and in collagen fibril assembly.

---

Gene ID: 10609

---

UniProt: [Q92791](#)

---

## Application Details

---

Application Notes: WB 1:300-5000  
ELISA 1:500-1000  
IHC-P 1:200-400  
IHC-F 1:100-500  
IF(IHC-P) 1:50-200  
IF(IHC-F) 1:50-200  
IF(ICC) 1:50-200  
ICC 1:100-500

---

Restrictions: For Research Use only

---

## Handling

---

Format: Liquid

---

Concentration: 1 µg/µL

---

Buffer: 0.01M TBS( pH 7.4) with 1 % BSA, 0.02 % Proclin300 and 50 % Glycerol.

---

Preservative: ProClin

---

Precaution of Use: This product contains ProClin: a POISONOUS AND HAZARDOUS SUBSTANCE, which should be handled by trained staff only.

---

Storage: 4 °C,-20 °C

---

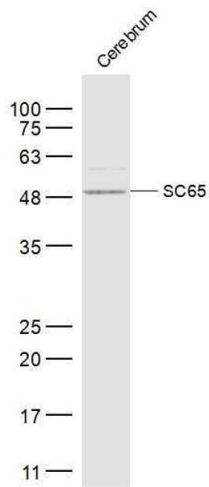
Storage Comment: Shipped at 4°C. Store at -20°C for one year. Avoid repeated freeze/thaw cycles.

---

## Handling

Expiry Date: 12 months

## Images



### Western Blotting

**Image 1.** Rat cerebrum lysates probed with SC65 Polyclonal Antibody, Unconjugated at 1:300 dilution and 4°C overnight incubation. Followed by conjugated secondary antibody incubation at 1:10000 for 60 min at 37°C.