

Datasheet for ABIN5675689
anti-ZCCHC4 antibody (AA 301-400)



[Go to Product page](#)

1 Image

Overview

Quantity:	100 µL
Target:	ZCCHC4
Binding Specificity:	AA 301-400
Reactivity:	Human
Host:	Rabbit
Clonality:	Polyclonal
Conjugate:	This ZCCHC4 antibody is un-conjugated
Application:	Western Blotting (WB), ELISA, Immunofluorescence (Cultured Cells) (IF (cc)), Immunofluorescence (Paraffin-embedded Sections) (IF (p)), Immunohistochemistry (Paraffin- embedded Sections) (IHC (p)), Immunohistochemistry (Frozen Sections) (IHC (fro)), Immunocytochemistry (ICC)

Product Details

Immunogen:	KLH conjugated synthetic peptide derived from human ZCCHC4
Isotype:	IgG
Cross-Reactivity:	Human
Predicted Reactivity:	Mouse,Rat,Dog,Cow,Sheep,Rabbit
Purification:	Purified by Protein A.

Target Details

Target:	ZCCHC4
---------	--------

Target Details

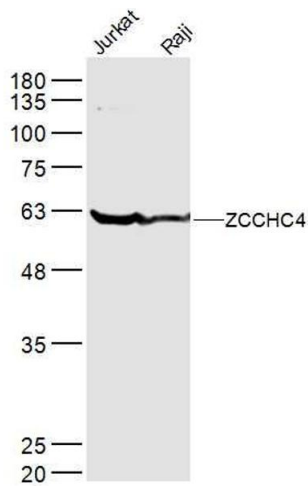
Alternative Name:	ZCCHC4 (ZCCHC4 Products)
Background:	Synonyms: 4930449I23Rik, HSPC052, MGC21108, OTTMUSP00000027189, zcchc4, ZCHC4_HUMAN, Zinc finger CCHC domain containing protein 4, Zinc finger CCHC domain-containing protein 4, Zinc finger, CCHC domain containing 4 Background: May be a methyltransferase.
Gene ID:	29063
UniProt:	Q9H5U6

Application Details

Application Notes:	WB 1:300-5000 ELISA 1:500-1000 IHC-P 1:200-400 IHC-F 1:100-500 IF(IHC-P) 1:50-200 IF(IHC-F) 1:50-200 IF(ICC) 1:50-200 ICC 1:100-500
Restrictions:	For Research Use only

Handling

Format:	Liquid
Concentration:	1 µg/µL
Buffer:	0.01M TBS(pH 7.4) with 1 % BSA, 0.02 % Proclin300 and 50 % Glycerol.
Preservative:	ProClin
Precaution of Use:	This product contains ProClin: a POISONOUS AND HAZARDOUS SUBSTANCE, which should be handled by trained staff only.
Storage:	4 °C,-20 °C
Storage Comment:	Shipped at 4°C. Store at -20°C for one year. Avoid repeated freeze/thaw cycles.
Expiry Date:	12 months



Western Blotting

Image 1. Lane 1: jurkat lysates Lane 2: raji lysates probed with ZCCHC4 Polyclonal Antibody, Unconjugated at 1:300 dilution and 4°C overnight incubation. Followed by conjugated secondary antibody incubation at 1:10000 for 60 min at 37°C.