

Datasheet for ABIN5675707
anti-PCBD2 antibody (AA 31-130)[Go to Product page](#)

1 Image

Overview

Quantity:	100 µL
Target:	PCBD2
Binding Specificity:	AA 31-130
Reactivity:	Rat
Host:	Rabbit
Clonality:	Polyclonal
Conjugate:	This PCBD2 antibody is un-conjugated
Application:	Western Blotting (WB), Immunofluorescence (Cultured Cells) (IF (cc)), Immunofluorescence (Paraffin-embedded Sections) (IF (p)), ELISA, Immunohistochemistry (Frozen Sections) (IHC (fro)), Immunohistochemistry (Paraffin-embedded Sections) (IHC (p)), Immunocytochemistry (ICC)

Product Details

Immunogen:	KLH conjugated synthetic peptide derived from human PCBD2
Isotype:	IgG
Cross-Reactivity:	Rat
Predicted Reactivity:	Human,Mouse,Cow,Sheep,Horse
Purification:	Purified by Protein A.

Target Details

Target:	PCBD2
---------	-------

Target Details

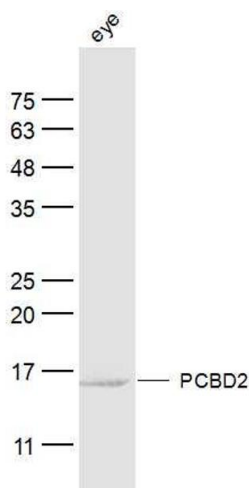
Alternative Name:	PCBD2 (PCBD2 Products)
Background:	<p>Synonyms: Pterin-4-alpha-carbinolamine dehydratase 2, PCBD2, PHS 2, 4-alpha-hydroxy-tetrahydropterin dehydratase 2, DcoH-like protein DCoHm, Dimerization cofactor of hepatocyte nuclear factor 1 from muscle, HNF-1-alpha dimerization cofactor, PCBD2, DCOH2, DCOHM</p> <p>Background: Involved in tetrahydrobiopterin biosynthesis. Seems to both prevent the formation of 7-pterins and accelerate the formation of quinonoid-BH2. Regulates the dimerization of homeodomain protein HNF-1-alpha and enhances its transcriptional activity.</p>
Gene ID:	84105
UniProt:	Q9H0N5

Application Details

Application Notes:	<p>WB 1:300-5000</p> <p>ELISA 1:500-1000</p> <p>IHC-P 1:200-400</p> <p>IHC-F 1:100-500</p> <p>IF(IHC-P) 1:50-200</p> <p>IF(IHC-F) 1:50-200</p> <p>IF(ICC) 1:50-200</p> <p>ICC 1:100-500</p>
Restrictions:	For Research Use only

Handling

Format:	Liquid
Concentration:	1 µg/µL
Buffer:	0.01M TBS(pH 7.4) with 1 % BSA, 0.02 % Proclin300 and 50 % Glycerol.
Preservative:	ProClin
Precaution of Use:	This product contains ProClin: a POISONOUS AND HAZARDOUS SUBSTANCE, which should be handled by trained staff only.
Storage:	4 °C, -20 °C
Storage Comment:	Shipped at 4°C. Store at -20°C for one year. Avoid repeated freeze/thaw cycles.
Expiry Date:	12 months



Western Blotting

Image 1. Ray eye lysates probed with PCBD2 Polyclonal Antibody, Unconjugated at 1:300 dilution and 4°C overnight incubation. Followed by conjugated secondary antibody incubation at 1:10000 for 60 min at 37°C.