

Datasheet for ABIN5675752  
**anti-TESPA1 antibody (AA 231-330)**[Go to Product page](#)

## 1 Image

## Overview

Quantity:	100 µL
Target:	TESPA1
Binding Specificity:	AA 231-330
Reactivity:	Human
Host:	Rabbit
Clonality:	Polyclonal
Conjugate:	This TESPA1 antibody is un-conjugated
Application:	ELISA, Western Blotting (WB), Immunofluorescence (Cultured Cells) (IF (cc)), Immunofluorescence (Paraffin-embedded Sections) (IF (p)), Immunocytochemistry (ICC), Immunohistochemistry (Frozen Sections) (IHC (fro)), Immunohistochemistry (Paraffin-embedded Sections) (IHC (p))

## Product Details

Immunogen:	KLH conjugated synthetic peptide derived from human TESPA1
Isotype:	IgG
Cross-Reactivity:	Human
Predicted Reactivity:	Rabbit
Purification:	Purified by Protein A.

## Target Details

Target:	TESPA1
---------	--------

## Target Details

Alternative Name:	TESPA1 ( <a href="#">TESPA1 Products</a> )
Background:	<p>Synonyms: Protein TESP1, TESP1, Thymocyte-expressed positive selection-associated protein 1, KIAA0748, HSPC257</p> <p>Background: Required for the development and maturation of T-cells, its function being essential for the late stages of thymocyte development (By similarity). Plays a role in T-cell antigen receptor (TCR)-mediated activation of the ERK and NFAT signaling pathways, possibly by serving as a scaffolding protein that promotes the assembly of the LAT signalosome in thymocytes. May play a role in the regulation of inositol 1,4,5-trisphosphate receptor-mediated Ca<sup>2+</sup> release and mitochondrial Ca<sup>2+</sup> uptake via the mitochondria-associated endoplasmic reticulum membrane (MAM) compartment.</p>
Gene ID:	9840
UniProt:	<a href="#">A2RU30</a>

## Application Details

Application Notes:	<p>WB 1:300-5000</p> <p>ELISA 1:500-1000</p> <p>IHC-P 1:200-400</p> <p>IHC-F 1:100-500</p> <p>IF(IHC-P) 1:50-200</p> <p>IF(IHC-F) 1:50-200</p> <p>IF(ICC) 1:50-200</p> <p>ICC 1:100-500</p>
Restrictions:	For Research Use only

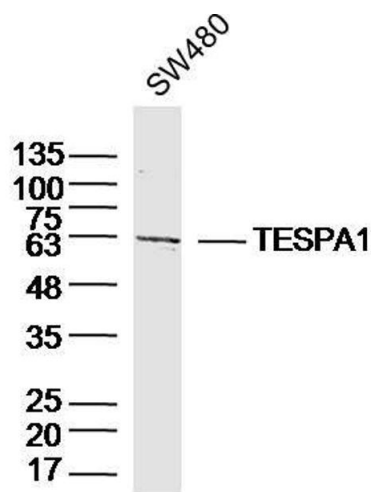
## Handling

Format:	Liquid
Concentration:	1 µg/µL
Buffer:	0.01M TBS( pH 7.4) with 1 % BSA, 0.02 % Proclin300 and 50 % Glycerol.
Preservative:	ProClin
Precaution of Use:	This product contains ProClin: a POISONOUS AND HAZARDOUS SUBSTANCE, which should be handled by trained staff only.
Storage:	4 °C,-20 °C

Handling

Storage Comment:	Shipped at 4°C. Store at -20°C for one year. Avoid repeated freeze/thaw cycles.
Expiry Date:	12 months

Images



Western Blotting

**Image 1.** SW480 lysates probed with TESPA1 Polyclonal Antibody, Unconjugated at 1:300 dilution and 4°C overnight incubation. Followed by conjugated secondary antibody incubation at 1:10000 for 60 min at 37°C.