



[Go to Product page](#)

Datasheet for ABIN5675755
anti-EXD2 antibody (AA 351-621)

2 Images

Overview

Quantity:	100 µL
Target:	EXD2
Binding Specificity:	AA 351-621
Reactivity:	Human, Mouse, Rat
Host:	Rabbit
Clonality:	Polyclonal
Conjugate:	This EXD2 antibody is un-conjugated
Application:	Western Blotting (WB), ELISA, Immunofluorescence (Cultured Cells) (IF (cc)), Immunofluorescence (Paraffin-embedded Sections) (IF (p)), Immunohistochemistry (Paraffin-embedded Sections) (IHC (p)), Immunohistochemistry (Frozen Sections) (IHC (fro)), Immunocytochemistry (ICC)

Product Details

Immunogen:	KLH conjugated synthetic peptide derived from human EXD2
Isotype:	IgG
Specificity:	WB shows isoform 2
Cross-Reactivity:	Human, Mouse, Rat
Predicted Reactivity:	Dog,Cow,Sheep,Pig,Horse
Purification:	Purified by Protein A.

Target Details

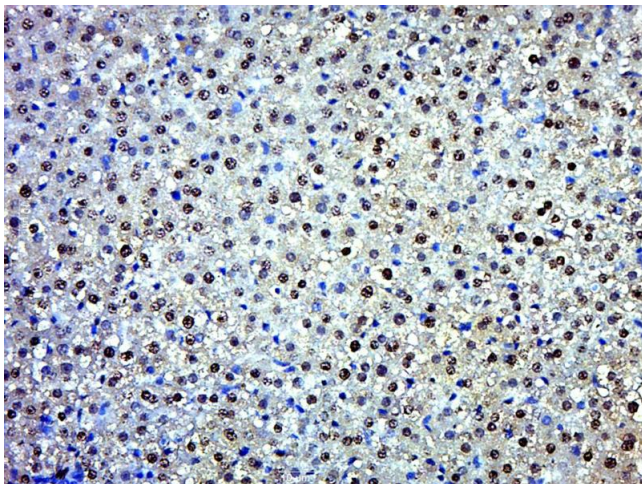
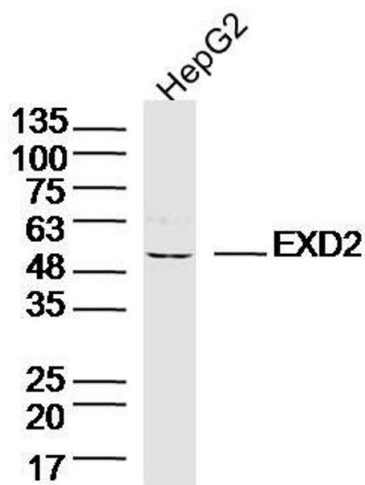
Target:	EXD2
Alternative Name:	EXD2 (EXD2 Products)
Background:	Synonyms: Exonuclease 3'-5' domain-containing protein 2, EXD2, C14orf114, EXDL2 Background: Exonuclease required for double-strand breaks resection and efficient homologous recombination. Plays a key role in controlling the initial steps of chromosomal break repair, it is recruited to chromatin in a damage-dependent manner and functionally interacts with the MRN complex to accelerate resection through its 3'-5' exonuclease activity, which efficiently processes double-stranded DNA substrates containing nicks.
Gene ID:	55218
UniProt:	Q9NVH0

Application Details

Application Notes:	WB 1:300-5000 ELISA 1:500-1000 IHC-P 1:200-400 IHC-F 1:100-500 IF(IHC-P) 1:50-200 IF(IHC-F) 1:50-200 IF(ICC) 1:50-200 ICC 1:100-500
Restrictions:	For Research Use only

Handling

Format:	Liquid
Concentration:	1 µg/µL
Buffer:	0.01M TBS(pH 7.4) with 1 % BSA, 0.02 % Proclin300 and 50 % Glycerol.
Preservative:	ProClin
Precaution of Use:	This product contains ProClin: a POISONOUS AND HAZARDOUS SUBSTANCE, which should be handled by trained staff only.
Storage:	4 °C,-20 °C
Storage Comment:	Shipped at 4°C. Store at -20°C for one year. Avoid repeated freeze/thaw cycles.



Western Blotting

Image 1. HepG2 lysates probed with EXD2 Polyclonal Antibody, Unconjugated at 1:300 dilution and 4°C overnight incubation. Followed by conjugated secondary antibody incubation at 1:10000 for 60 min at 37°C.

Immunohistochemistry (Paraffin-embedded Sections)

Image 2. Paraformaldehyde-fixed, paraffin embedded Rat liver Antigen retrieval by boiling in sodium citrate buffer (pH6.0) for 15min Block endogenous peroxidase by 3% hydrogen peroxide for 20 minutes Blocking buffer (normal goat serum) at 37°C for 30min Antibody incubation with EXD2 Polyclonal Antibody, Unconjugated at 1:400 overnight at 4°C, DAB staining.