



[Go to Product page](#)

Datasheet for ABIN5675770  
**anti-SPATA21 antibody (AA 181-280)**

1 Image

### Overview

Quantity:	100 µL
Target:	SPATA21
Binding Specificity:	AA 181-280
Reactivity:	Mouse
Host:	Rabbit
Clonality:	Polyclonal
Conjugate:	This SPATA21 antibody is un-conjugated
Application:	Western Blotting (WB), ELISA, Immunofluorescence (Paraffin-embedded Sections) (IF (p)), Immunofluorescence (Cultured Cells) (IF (cc)), Immunocytochemistry (ICC)

### Product Details

Immunogen:	KLH conjugated synthetic peptide derived from human SPATA21
Isotype:	IgG
Cross-Reactivity:	Mouse
Predicted Reactivity:	Human,Rat,Horse
Purification:	Purified by Protein A.

### Target Details

Target:	SPATA21
Alternative Name:	SPATA21 ( <a href="#">SPATA21 Products</a> )

## Target Details

---

Background: Synonyms: Spata21, Spergen 2, Spergen2, Spermatogenesis-associated protein 21, SPT21\_HUMAN.  
Background: Involved in the differentiation of haploid spermatids.

---

Gene ID: 374955

---

UniProt: [Q7Z572](#)

---

## Application Details

---

Application Notes: WB 1:300-5000  
ELISA 1:500-1000  
IF(IHC-P) 1:50-200  
IF(IHC-F) 1:50-200  
IF(ICC) 1:50-200  
ICC 1:100-500

---

Restrictions: For Research Use only

---

## Handling

---

Format: Liquid

---

Concentration: 1 µg/µL

---

Buffer: 0.01M TBS( pH 7.4) with 1 % BSA, 0.02 % Proclin300 and 50 % Glycerol.

---

Preservative: ProClin

---

Precaution of Use: This product contains ProClin: a POISONOUS AND HAZARDOUS SUBSTANCE, which should be handled by trained staff only.

---

Storage: 4 °C, -20 °C

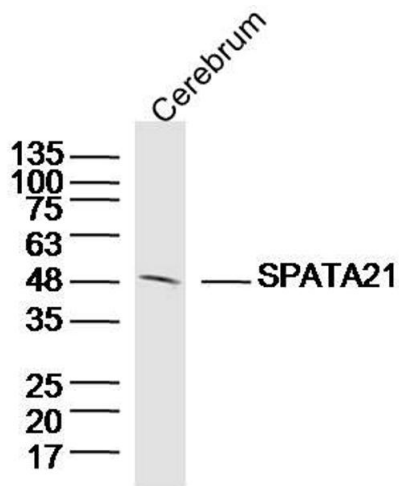
---

Storage Comment: Shipped at 4°C. Store at -20°C for one year. Avoid repeated freeze/thaw cycles.

---

Expiry Date: 12 months

---



**Image 1.** Mouse cerebrum lysates probed with SPATA21 Polyclonal Antibody, Unconjugated at 1:300 dilution and 4°C overnight incubation. Followed by conjugated secondary antibody incubation at 1:10000 for 60 min at 37°C.