

Datasheet for ABIN5675790
anti-CBX5 antibody



[Go to Product page](#)

1 Image

Overview

Quantity:	100 µL
Target:	CBX5
Reactivity:	Human, Mouse, Rat
Host:	Mouse
Clonality:	Monoclonal
Conjugate:	This CBX5 antibody is un-conjugated
Application:	Western Blotting (WB)

Product Details

Immunogen:	KLH conjugated synthetic peptide derived from human HP1 alpha
Clone:	7E3
Isotype:	IgG
Cross-Reactivity:	Human, Mouse, Rat
Purification:	Purified by Protein A.

Target Details

Target:	CBX5
Alternative Name:	HP1 alpha (CBX5 Products)
Background:	Synonyms: Antigen p25, HP1-, CBX5, CBX5_HUMAN, Chromobox homolog 5 (HP1 alpha homolog, Drosophila), Chromobox homolog 5, Chromobox protein homolog 5, Heterochromatin

Target Details

protein 1 alpha, Heterochromatin protein 1, Heterochromatin protein 1 homolog alpha, HP1 alpha, HP1 alpha homolog, HP1, HP1A, HP1Hs alpha.

Background: Component of heterochromatin that recognizes and binds histone H3 tails methylated at 'Lys-9' (H3K9me), leading to epigenetic repression. In contrast, it is excluded from chromatin when 'Tyr-41' of histone H3 is phosphorylated (H3Y41ph). Can interact with lamin-B receptor (LBR). This interaction can contribute to the association of the heterochromatin with the inner nuclear membrane. Involved in the formation of functional kinetochore through interaction with MIS12 complex proteins.

Gene ID: 23468

UniProt: [P45973](#)

Application Details

Application Notes: WB 1:300-5000

Restrictions: For Research Use only

Handling

Format: Liquid

Concentration: 1 µg/µL

Buffer: 0.01M TBS(pH 7.4) with 1 % BSA, 0.02 % Proclin300 and 50 % Glycerol.

Preservative: ProClin

Precaution of Use: This product contains ProClin: a POISONOUS AND HAZARDOUS SUBSTANCE, which should be handled by trained staff only.

Storage: 4 °C,-20 °C

Storage Comment: Shipped at 4°C. Store at -20°C for one year. Avoid repeated freeze/thaw cycles.

Expiry Date: 12 months

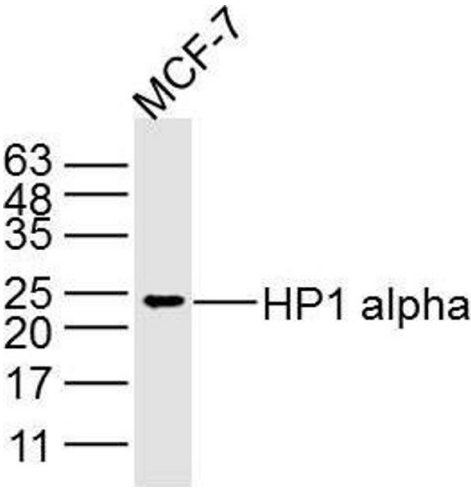


Image 1. MCF-7 lysates probed with HP1 alpha Polyclonal Antibody, Unconjugated at 1:300 dilution and 4°C overnight incubation. Followed by conjugated secondary antibody incubation at 1:10000 for 60 min at 37°C.