

Datasheet for ABIN5676027
anti-Protein A antibody (Rhodamine)



[Go to Product page](#)

1 Image

Overview

Quantity:	1 mg
Target:	Protein A
Reactivity:	Staphylococcus aureus
Host:	Goat
Clonality:	Polyclonal
Conjugate:	This Protein A antibody is conjugated to Rhodamine
Application:	Immunofluorescence (IF)

Product Details

Immunogen:	Protein A antibody (rhodamine) was raised in goat using Protein A [Staphylococcus aureus] as the immunogen.
Purification:	Protein A antibody (rhodamine) was purified by delipidation, salt fractionation and ion exchange chromatography followed by dialysis.

Target Details

Target:	Protein A
Abstract:	Protein A Products

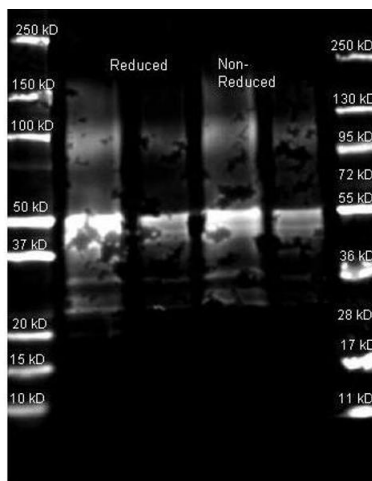
Application Details

Application Notes:	IF: 1:500-1:2,500
Restrictions:	For Research Use only

Handling

Format:	Liquid
Concentration:	Lot specific
Buffer:	as a liquid 20 mM Potassium Phosphate and 150 mM NaCl, pH 7.2, with 10 mg/mL BSA (IgG and Protease free), with 0.01 % NaN ₃ .
Preservative:	Sodium azide
Precaution of Use:	This product contains sodium azide as preservative. Although the amount of sodium azide is very small appropriate care must be taken when handling this product.
Handling Advice:	Avoid repeated freeze/thaw cycles
Storage:	-20 °C
Storage Comment:	Store at 4 °C until reconstitution. Following reconstitution aliquot and freeze at -20 °C for long term storage.

Images



Western Blotting

Image 1. Protein A antibody was used to detect Protein A under reducing and non-reducing conditions. Reduced samples of purified Protein A contained 4% BME and were boiled for 5 minutes. Samples of