

Datasheet for ABIN567629

anti-TUBB2B antibody

4 Images

[Go to Product page](#)

Overview

Quantity:	0.1 mL
Target:	TUBB2B
Reactivity:	Human, Mouse
Host:	Mouse
Clonality:	Monoclonal
Conjugate:	This TUBB2B antibody is un-conjugated
Application:	Western Blotting (WB), Immunofluorescence (IF), Immunohistochemistry (Paraffin-embedded Sections) (IHC (p)), Enzyme Immunoassay (EIA)

Product Details

Clone:	AT5B2
Isotype:	IgG2b
Specificity:	The antibody recognizes human and mouse beta-Tubulin. Other species not tested.
Purification:	Protein-G affinity chromatography

Target Details

Target:	TUBB2B
Alternative Name:	TUBB2B (TUBB2B Products)
Background:	Tubulin is a major cytoskeleton component that has five distinct forms. Multiple beta Tubulin isoforms have been characterized and are expressed in mammalian tissues. Tubulin is the major constituent of microtubules. It binds two moles of GTP, one at an exchangeable site on

Target Details

	the beta chain and one at a non-exchangeable site on the alpha-chain.Synonyms: RP11-506K6.1, Tubulin beta-2B chain, beta II Tubulin B, beta-Tubulin
Gene ID:	347733
Pathways:	Microtubule Dynamics

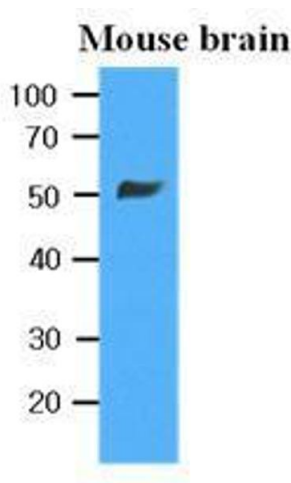
Application Details

Application Notes:	Optimal working dilution should be determined by the investigator.
Restrictions:	For Research Use only

Handling

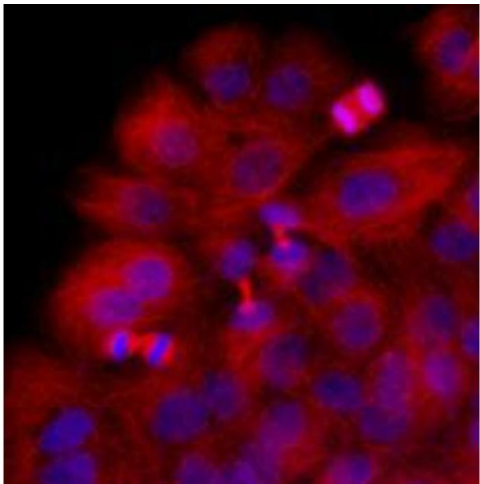
Format:	Liquid
Concentration:	1.0 mg/mL
Buffer:	PBS, pH 7.4, containing 0.09 % sodium azide
Preservative:	Sodium azide
Precaution of Use:	This product contains sodium azide: a POISONOUS AND HAZARDOUS SUBSTANCE which should be handled by trained staff only.

Images



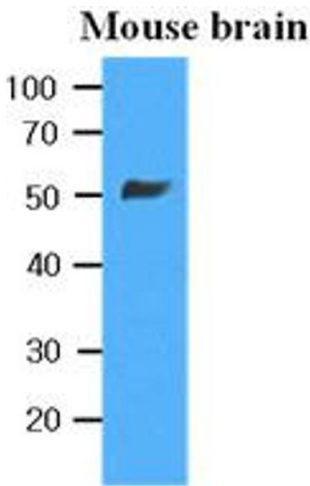
Western Blotting

Image 1.



Immunofluorescence

Image 2.



Western Blotting

Image 3.

Please check the [product details page](#) for more images. Overall 4 images are available for ABIN567629.