

Datasheet for ABIN567786
anti-MAD2L1 antibody[Go to Product page](#)

2 Images

Overview

Quantity:	0.1 mg
Target:	MAD2L1
Reactivity:	Human, Mouse, Rat
Host:	Mouse
Clonality:	Monoclonal
Conjugate:	This MAD2L1 antibody is un-conjugated
Application:	Western Blotting (WB), Immunoprecipitation (IP)

Product Details

Immunogen:	Recombinant Human MAD2.
Clone:	2G9
Isotype:	IgG1
Specificity:	This antibody reacts with MAD2 (25 kDa) on Western blotting and Immunoprecipitation.
Purification:	Protein-A Agarose Chromatography of hybridoma supernatant.

Target Details

Target:	MAD2L1
Alternative Name:	MAD2L1 (MAD2L1 Products)
Background:	Some of the spindle checkpoint components are evolutionarily conserved from yeast to human. They include mitotic arrest deficiency 1 (MAD1), MAD2, MAD3/BUBR1, budding uninhibited by

Target Details

benomyl 1 (BUB1), BUB3, and monopolar spindle 1 (MPS1). MAD1 interacts with several checkpoint proteins, forming a complex with MAD2 and recruiting MAD2 to unattached kinetochores. MAD1 and Cdc20 can bind MAD2, but these two bindings are exclusive. They share a 10-residue MAD2-binding motif. It has been suggested that MAD1 acts as a positive regulator and a competitive inhibitor of the MAD2-Cdc20 complex. Synonyms: MAD2, Mitotic spindle assembly checkpoint protein MAD2A

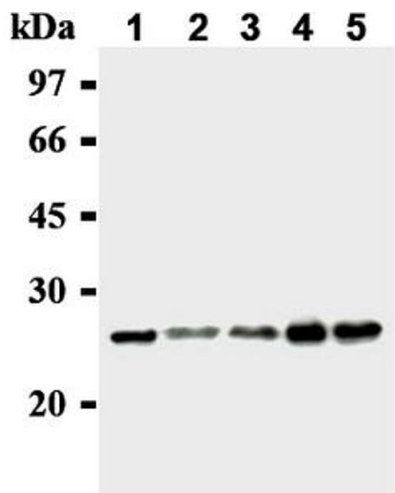
Gene ID:	4085
NCBI Accession:	NP_002349
UniProt:	Q13257

Application Details

Application Notes:	Optimal working dilution should be determined by the investigator.
Restrictions:	For Research Use only

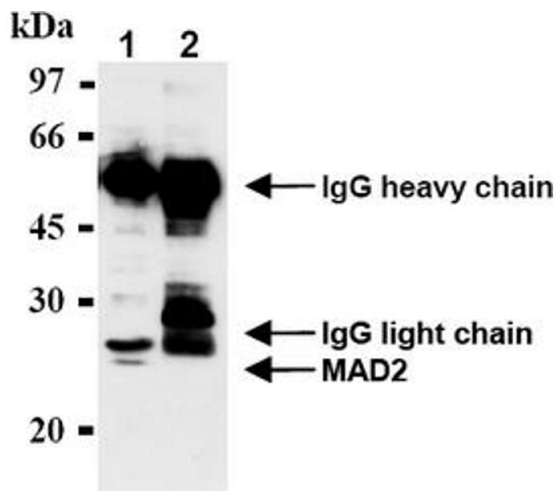
Handling

Concentration:	1.0 mg/mL
Buffer:	PBS, pH 7.2 containing 50 % Glycerol without preservatives.
Preservative:	Without preservative
Handling Advice:	Avoid repeated freezing and thawing.
Storage:	-20 °C
Storage Comment:	Store the antibody (in aliquots) at -20 °C.



Western Blotting

Image 1.



Western Blotting

Image 2.