



[Go to Product page](#)

Datasheet for ABIN567792
anti-RAD21 antibody (C-Term)

2 Images

Overview

Quantity:	0.1 mg
Target:	RAD21
Binding Specificity:	AA 544-631, C-Term
Reactivity:	Human, Mouse, Rat
Host:	Rat
Clonality:	Monoclonal
Conjugate:	This RAD21 antibody is un-conjugated
Application:	Western Blotting (WB), Immunoprecipitation (IP)

Product Details

Immunogen:	Recombinant C-terminal fragment (544-631 aa) of Scc1 subunit of Human Cohesin (hRad21).
Clone:	CM110-2C10
Isotype:	IgG1
Specificity:	This antibody reacts with Cohesin (120 kDa) on Western blotting.
Purification:	Protein-A Agarose Chromatography of hybridoma supernatant.

Target Details

Target:	RAD21
Alternative Name:	RAD21 (RAD21 Products)
Background:	Cohesin in eukaryotic cells is mediated by a multisubunit protein complex. Cohesin consists of

Target Details

four proteins: Smc1, Smc3, Scc1/Mcd1/hRad21, which is called kleisin and is the target of the protease separase, and Scc3/Irr1. Cohesin holds sister chromatids together until they separate into daughter cells during mitosis and also prevents splitting of chromosomes once bipolar attachments are made. Synonyms: Double-strand-break repair protein rad21 homolog, HR21, KIAA0078, NXP1, Nuclear matrix protein 1, SCC1 homolog

Gene ID: 5885

NCBI Accession: [NP_006256](#)

UniProt: [O60216](#)

Pathways: [Positive Regulation of Endopeptidase Activity](#)

Application Details

Application Notes: Optimal working dilution should be determined by the investigator.

Restrictions: For Research Use only

Handling

Concentration: 1.0 mg/mL

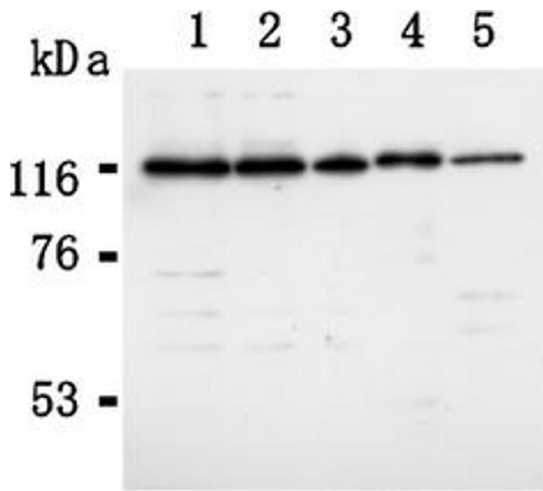
Buffer: PBS, pH 7.2 containing 50 % Glycerol without preservatives.

Preservative: Without preservative

Handling Advice: Avoid repeated freezing and thawing.

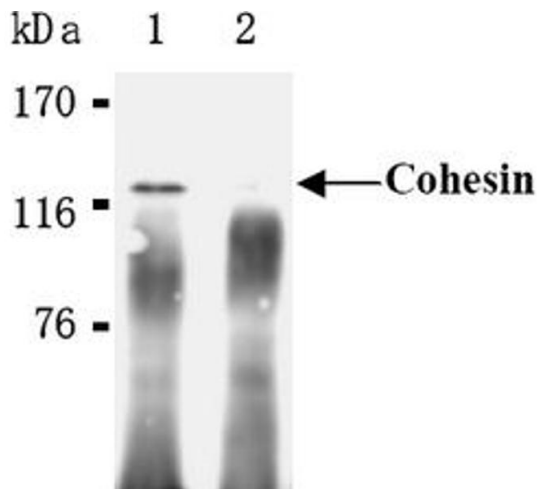
Storage: -20 °C

Storage Comment: Store the antibody (in aliquots) at -20 °C.



Western Blotting

Image 1.



Western Blotting

Image 2.