



Datasheet for ABIN5679768
anti-PPP1CA antibody (N-Term)



[Go to Product page](#)

1 Image

Overview

Quantity:	50 µg
Target:	PPP1CA
Binding Specificity:	N-Term
Reactivity:	Human
Host:	Mouse
Clonality:	Monoclonal
Conjugate:	This PPP1CA antibody is un-conjugated
Application:	Western Blotting (WB), ELISA

Product Details

Purpose:	Mouse monoclonal antibody raised against partial recombinant protein of PPP1CA.
Immunogen:	Recombinant protein corresponding to N-terminus of human PPP1CA.
Cross-Reactivity:	Human

Target Details

Target:	PPP1CA
Alternative Name:	PPP1CA (PPP1CA Products)
Background:	Full Gene Name: protein phosphatase 1, catalytic subunit, alpha isoform Synonyms: MGC15877,MGC1674,PP-1A,PPP1A
Gene ID:	5499

Target Details

Pathways: [M Phase](#), [Cellular Glucan Metabolic Process](#), [Regulation of Carbohydrate Metabolic Process](#), [Lipid Metabolism](#)

Application Details

Application Notes: ELISA (1:5000-1:20000)
Western Blot (1:100-1:2000)
The optimal working dilution should be determined by the end user.

Restrictions: For Research Use only

Handling

Format: Liquid

Buffer: In PBS, pH 7.4 (50 % glycerol, 0.02 % sodium azide)

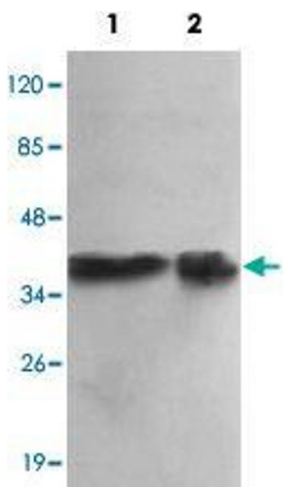
Preservative: Sodium azide

Precaution of Use: This product contains Sodium azide: a POISONOUS AND HAZARDOUS SUBSTANCE which should be handled by trained staff only.

Storage: -20 °C

Storage Comment: Store at -20°C.
Aliquot to avoid repeated freezing and thawing.

Images



Western Blotting

Image 1. Western blot analysis of PPP1CA monoclonal antibody at 1:1000 dilution. Lane 1: HepG2 whole cell lysate 40 ug/lane. Lane 2: HeLa whole cell lysate 40 ug/lane. Predicted band size: 37 KDa. Observed band size: 37 KDa.