

Datasheet for ABIN5679784
anti-Nucleobindin 1 antibody (C-Term)[Go to Product page](#)

1 Image

Overview

Quantity:	200 µL
Target:	Nucleobindin 1 (NUCB1)
Binding Specificity:	C-Term
Reactivity:	Human
Host:	Rabbit
Clonality:	Polyclonal
Conjugate:	This Nucleobindin 1 antibody is un-conjugated
Application:	Western Blotting (WB), ELISA

Product Details

Purpose:	Rabbit polyclonal antibody raised against synthetic peptide of NUCB1.
Immunogen:	A synthetic peptide corresponding to 15 amino acids at C-terminus of human NUCB1.
Cross-Reactivity:	Human

Target Details

Target:	Nucleobindin 1 (NUCB1)
Alternative Name:	NUCB1 (NUCB1 Products)
Background:	Full Gene Name: nucleobindin 1 Synonyms: DKFZp686A15286,FLJ40471,NUC
Gene ID:	4924

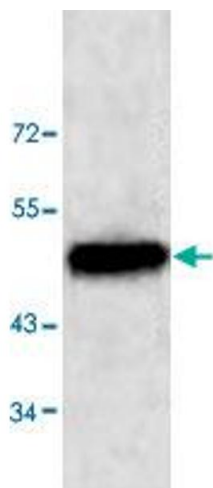
Application Details

Application Notes:	ELISA (1:10000-1:40000) Western Blot (1:200-1:1000) The optimal working dilution should be determined by the end user.
Restrictions:	For Research Use only

Handling

Format:	Lyophilized
Buffer:	In buffer containing 0.02 % sodium azide
Preservative:	Sodium azide
Precaution of Use:	This product contains Sodium azide: a POISONOUS AND HAZARDOUS SUBSTANCE which should be handled by trained staff only.
Storage:	4 °C,-20 °C
Storage Comment:	Store at 4°C for three months. For long term storage store at -20°C. Aliquot to avoid repeated freezing and thawing.

Images



Western Blotting

Image 1. Western blot analysis of HeLa cell lysate with NUCB1 polyclonal antibody at 1 : 500 dilution.