

Datasheet for ABIN5679803
anti-TOP2B antibody (C-Term)[Go to Product page](#)

1 Image

Overview

Quantity:	200 µL
Target:	TOP2B
Binding Specificity:	C-Term
Reactivity:	Human
Host:	Rabbit
Clonality:	Polyclonal
Conjugate:	This TOP2B antibody is un-conjugated
Application:	Western Blotting (WB), ELISA

Product Details

Purpose:	Rabbit polyclonal antibody raised against synthetic peptide of TOP2B.
Immunogen:	A synthetic peptide corresponding to 15 amino acids at C-terminus of human TOP2B.
Sequence:	CFPTEPPSLP RTGRA
Cross-Reactivity:	Human

Target Details

Target:	TOP2B
Alternative Name:	TOP2B (TOP2B Products)
Background:	Full Gene Name: topoisomerase (DNA) II beta 180 kDa Synonyms: TOP1IB,top2beta

Target Details

Gene ID: 7155

Application Details

Application Notes: ELISA (1:10000-1:40000)
Western Blot (1:200-1:1000)
The optimal working dilution should be determined by the end user.

Restrictions: For Research Use only

Handling

Format: Liquid

Buffer: In buffer containing 0.02 % sodium azide

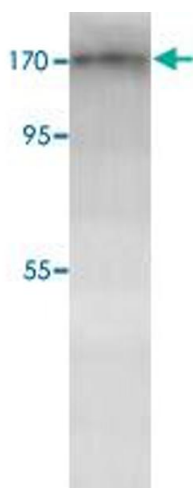
Preservative: Sodium azide

Precaution of Use: This product contains Sodium azide: a POISONOUS AND HAZARDOUS SUBSTANCE which should be handled by trained staff only.

Storage: 4 °C, -20 °C

Storage Comment: Store at 4°C for three months. For long term storage store at -20°C.
Aliquot to avoid repeated freezing and thawing.

Images



Western Blotting

Image 1. Western blot analysis of HeLa cell lysate with TOP2B polyclonal antibody at 1 : 200 dilution.