

Datasheet for ABIN5684018

**anti-HSP17.7 antibody (Cytoplasmic, Isoform 2)**[Go to Product page](#)**1** Image

## Overview

Quantity:	50 µL
Target:	HSP17.7 (LOC101266231)
Binding Specificity:	Cytoplasmic, Isoform 2
Reactivity:	Arabidopsis thaliana
Host:	Rabbit
Clonality:	Polyclonal
Conjugate:	This HSP17.7 antibody is un-conjugated
Application:	Western Blotting (WB)

## Product Details

Immunogen:	full length recombinant protein produced in E. coli and purified by conventional methods (no affinity tag). Arabidopsis thaliana Hsp17.7 CII (class two) O65376, At1g12030
Predicted Reactivity:	higher plants
Characteristics:	Expected / apparent Molecular Weight of the Antigen: 17.7 kDa
Purification:	serum

## Target Details

Target:	HSP17.7 (LOC101266231)
Alternative Name:	HSP17.7
Background:	AGI Code: At1g12030

## Target Details

Hsp17.7 belongs to a family of class II of a small heat shock proteins. They are induced once a plant cells are stressed by an increased temperature. The way small hsp proteins are protecting a living cell are not fully understood. They seem to be involved in chaperone functions by protecting other proteins from irreversible denaturation. Small hsp function also in a late seed maturation process.

Molecular Weight: 17.7 kDa

UniProt: [O65376](#)

## Application Details

Application Notes: Recommended Dilution: 1 : 1000 with standard ECL (WB).

Restrictions: For Research Use only

## Handling

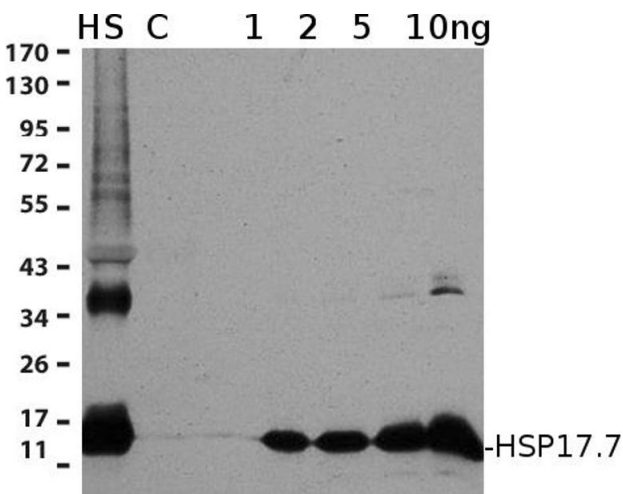
Format: Lyophilized

Reconstitution: For reconstitution add 200 µL of sterile water.

Handling Advice: Please, remember to spin tubes briefly prior to opening them to avoid any losses that might occur from lyophilized material adhering to the cap or sides of the tubes.  
Once reconstituted make aliquots to avoid repeated freeze-thaw cycles.

Storage: -20 °C

## Images



### Western Blotting

**Image 1.** From left to right: 15 ug of a total protein from HS-heat shocked (38 C, 2 hr) and C- control plants. Antibodies will work with less loaded per lane, eg. 5 ug of total seedling protein.