



Datasheet for ABIN5684021

anti-Toc75 antibody (Chloroplastic, Domain 3)



[Go to Product page](#)

1 Image

Overview

Quantity:	50 µL
Target:	Toc75
Binding Specificity:	Chloroplastic, Domain 3
Reactivity:	Pisum sativum, Synechococcus sp., Thermosynechococcus, Arabidopsis thaliana, Nicotiana tabacum, Spinach
Host:	Rabbit
Clonality:	Polyclonal
Application:	Immunolocalization (IL), Western Blotting (WB), Flow Cytometry (FACS)

Product Details

Immunogen:	psTOC75, Predicted POTRA Domain #3, Expressed and purified in E. coli using the Impact System from NEB. Peptide confirmed by MALDI. Q43715
Characteristics:	Expected / apparent Molecular Weight of the Antigene: 88 / 75 kDa (ocassionally a processing intermediate at 78 kDa is observed)
Purification:	serum

Target Details

Target:	Toc75
Background:	AGI Code: At3g46740 OEP 75 or Toc75, Chloroplast outer envelope membrane protein from Pisum sativum (pea), Predicted to contain 3 POTRA domains at N-terminus. Believed to be the protein conducting

Target Details

channel of the Toc translocon and assembles as an 18 stranded β -barrel (EMBO J. (1995) 14:11, 2436-2446), In Arabidopsis there are five members of this Family Toc75 (I-V), atToc75III is most closely related to psToc75. Additionally, it is structurally related to members of the bacterial surface antigen super-family including: OMA87, Outer membrane protein/protective antigen, (COG4775, COG4775) [Cell envelope biogenesis, outer membrane, YaeT, outer membrane protein assembly complex, (TIGR03303), FhaC, Hemolysin activation/secretion protein (COG2831) [Intracellular trafficking and secretion]

Molecular Weight: expected: 88 kDa, apparent: 75 kDa (ocassionally a processing intermediate at 78 kDa is observed)

UniProt: [Q43715](#)

Application Details

Application Notes: Recommended Dilution: 1 : 2000 - 1 : 25 000, 1 : 100 000 (WB), 1 : 500 (FACS). 1 : 100 (LSCM).

Comment: antibody detects Toc75 POTRA domain 3 as purified protein, in chloroplast fraction and in crude envelope fraction

Restrictions: For Research Use only

Handling

Format: Lyophilized

Reconstitution: For reconstitution add 200 μ L of sterile water

Handling Advice: Please, remember to spin tubes briefly prior to opening them to avoid any losses that might occur from lyophilized material adhering to the cap or sides of the tubes.
Once reconstituted make aliquots to avoid repeated freeze-thaw cycles.

Storage: -20 °C

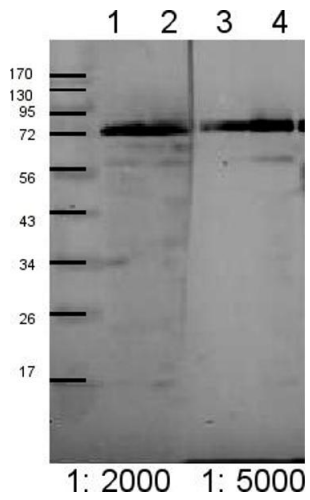


Image 1.