



[Go to Product page](#)

Datasheet for ABIN5684054
anti-IGHA1 antibody (AA 207-353)

7 Images

Overview

Quantity:	0.1 mg
Target:	IGHA1
Binding Specificity:	AA 207-353
Reactivity:	Human, Monkey, Mouse
Host:	Mouse
Clonality:	Monoclonal
Application:	ELISA, Flow Cytometry (FACS), Immunohistochemistry (IHC), Western Blotting (WB), Immunocytochemistry (ICC)

Product Details

Immunogen:	Purified recombinant fragment of human IghA1 (AA: 207-353) expressed in E. coli.
Clone:	7D5F12
Isotype:	IgG1
Purification:	purified

Target Details

Target:	IGHA1
Alternative Name:	IghA1 (IGHA1 Products)
Background:	Description: IGHA1 (Immunoglobulin Heavy Constant Alpha 1) is a Protein Coding gene. Diseases associated with IGHA1 include pseudotumor cerebri. Among its related pathways are Vesicle-mediated transport and Regulation of nuclear SMAD2/3 signaling. GO annotations

Target Details

related to this gene include antigen binding and immunoglobulin receptor binding. An important paralog of this gene is IGHG4.,

Aliases: IgA1

Molecular Weight: 37.6 kDa

Gene ID: 3493

HGNC: 3493

Application Details

Application Notes: ELISA: 1:10000, WB: 1:500 - 1:2000, IHC: 1:200 - 1:1000, ICC: 1:50 - 1:250, FCM: 1:200 - 1:400

Restrictions: For Research Use only

Handling

Format: Liquid

Buffer: Purified antibody in PBS with 0.05 % sodium azide

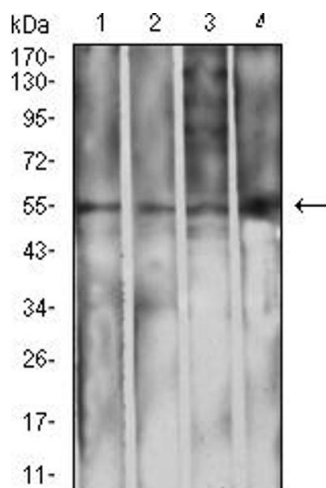
Preservative: Sodium azide

Precaution of Use: This product contains Sodium azide: a POISONOUS AND HAZARDOUS SUBSTANCE which should be handled by trained staff only.

Storage: 4 °C/-20 °C

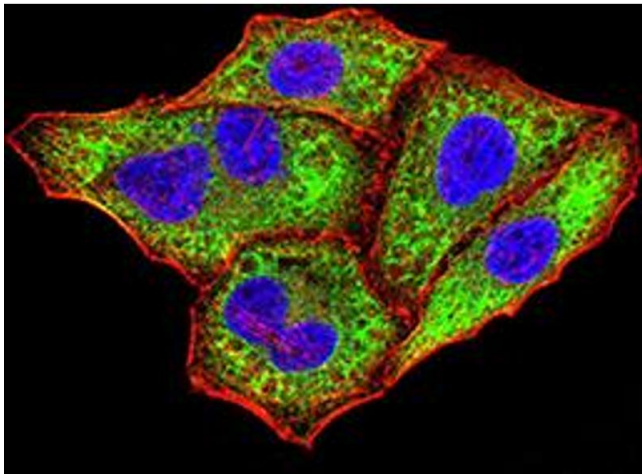
Storage Comment: 4°C, -20°C for long term storage

Images



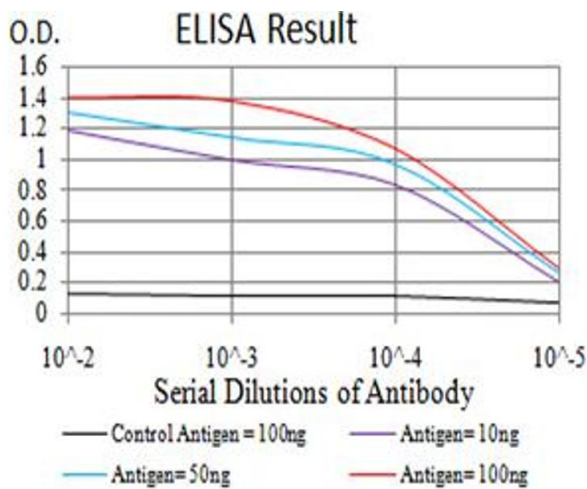
Western Blotting

Image 1. Western blot analysis using IghA1 mouse mAb against L1210 (1), THP-1 (2), HepG2 (3), and COS7 (4) cell lysate.



Immunofluorescence

Image 2. Immunofluorescence analysis of HeLa cells using IghA1 mouse mAb (green). Blue: DRAQ5 fluorescent DNA dye. Red: Actin filaments have been labeled with Alexa Fluor-555 phalloidin. Secondary antibody from Fisher



ELISA

Image 3. Black line: Control Antigen (100 ng);Purple line: Antigen (10ng); Blue line: Antigen (50 ng); Red line:Antigen (100 ng)

Please check the [product details page](#) for more images. Overall 7 images are available for ABIN5684054.