



[Go to Product page](#)

Datasheet for ABIN5684060
anti-TIM3 antibody (AA 229-410)

4 Images

Overview

Quantity:	0.1 mg
Target:	TIM3 (TIM 3)
Binding Specificity:	AA 229-410
Reactivity:	Human
Host:	Mouse
Clonality:	Monoclonal
Application:	Western Blotting (WB), Flow Cytometry (FACS), ELISA, Immunohistochemistry (IHC), Immunocytochemistry (ICC), Neutralization (Neut)

Product Details

Immunogen:	Purified recombinant fragment of human TIM3 (AA: 224-301) expressed in E. coli.
Clone:	1H6A1
Isotype:	IgG1
Purification:	purified

Target Details

Target:	TIM3 (TIM 3)
Alternative Name:	TIM3 (TIM 3 Products)
Target Type:	Virus
Background:	Description: The protein encoded by this gene belongs to the immunoglobulin superfamily, and

Target Details

TIM family of proteins. CD4-positive T helper lymphocytes can be divided into types 1 (Th1) and 2 (Th2) on the basis of their cytokine secretion patterns. Th1 cells are involved in cell-mediated immunity to intracellular pathogens and delayed-type hypersensitivity reactions, whereas, Th2 cells are involved in the control of extracellular helminthic infections and the promotion of atopic and allergic diseases. This protein is a Th1-specific cell surface protein that regulates macrophage activation, and inhibits Th1-mediated auto- and alloimmune responses, and promotes immunological tolerance.

Aliases: HAVCR2, CD366, KIM-3, TIMD3, Tim-3, TIMD-3, HAVcr-2

Molecular Weight: 33.4 kDa

Gene ID: 84868

HGNC: 550

Pathways: [Regulation of Lipid Metabolism by PPARalpha](#), [Cancer Immune Checkpoints](#)

Application Details

Application Notes: ELISA: 1:10000, WB: 1:500 - 1:2000, ICC: N/A, FCM: 1:200 - 1:400, IHC: N/A

Restrictions: For Research Use only

Handling

Format: Liquid

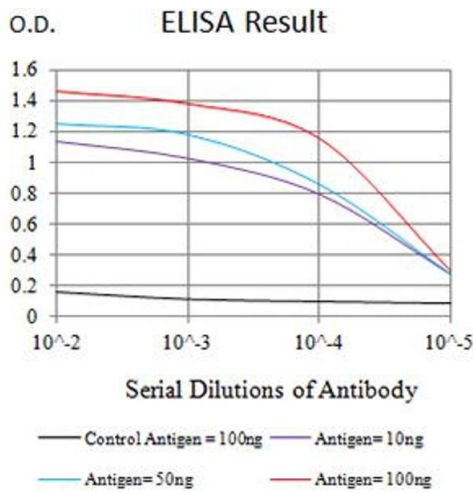
Buffer: Purified antibody in PBS with 0.05 % sodium azide

Preservative: Sodium azide

Precaution of Use: This product contains Sodium azide: a POISONOUS AND HAZARDOUS SUBSTANCE which should be handled by trained staff only.

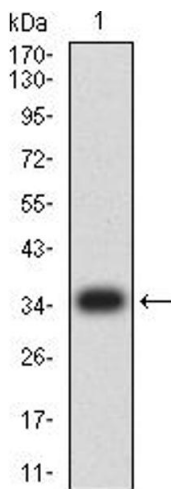
Storage: 4 °C/-20 °C

Storage Comment: 4°C, -20°C for long term storage



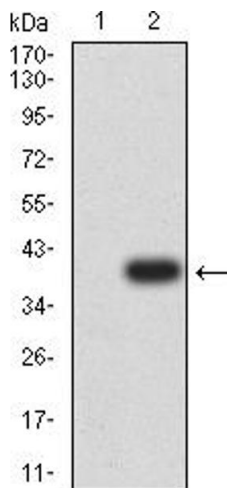
ELISA

Image 1. Black line: Control Antigen (100 ng),Purple line: Antigen (10 ng), Blue line: Antigen (50 ng), Red line:Antigen (100 ng)



Western Blotting

Image 2. Western blot analysis using TIM3 mAb against human TIM3 (AA: 224-301) recombinant protein. (Expected MW is 34.9 kDa)



Western Blotting

Image 3. Western blot analysis using TIM3 mAb against HEK293 (1) and TIM3 (AA: 224-301)-hlgGFc transfected HEK293 (2) cell lysate.

Please check the [product details page](#) for more images. Overall 4 images are available for ABIN5684060.