

Datasheet for ABIN5684069

anti-SERPINA3 antibody (AA 279-432)

7 Images

[Go to Product page](#)

Overview

Quantity:	0.1 mg
Target:	SERPINA3
Binding Specificity:	AA 279-432
Reactivity:	Human
Host:	Mouse
Clonality:	Monoclonal
Application:	Western Blotting (WB), Immunohistochemistry (IHC), ELISA, Flow Cytometry (FACS)

Product Details

Immunogen:	Purified recombinant fragment of human SERPINA3 (AA: 279-432) expressed in E. coli.
Clone:	5G3C11
Isotype:	IgG1 kappa
Purification:	purified

Target Details

Target:	SERPINA3
Alternative Name:	SERPINA3 (SERPINA3 Products)
Background:	Description: The protein encoded by this gene is a plasma protease inhibitor and member of the serine protease inhibitor class. Polymorphisms in this protein appear to be tissue specific and influence protease targeting. Variations in this protein's sequence have been implicated in Alzheimer's disease, and deficiency of this protein has been associated with liver disease.

Target Details

Mutations have been identified in patients with Parkinson disease and chronic obstructive pulmonary disease.

Aliases: ACT, AACT, GIG24, GIG25

Molecular Weight: 47.7 kDa

Gene ID: 12

HGNC: 12

Application Details

Application Notes: ELISA: 1:10000, WB: 1:500 - 1:2000, IHC: 1:200 - 1:1000, FCM: 1:200 - 1:400

Restrictions: For Research Use only

Handling

Format: Liquid

Buffer: Purified antibody in PBS with 0.05 % sodium azide.

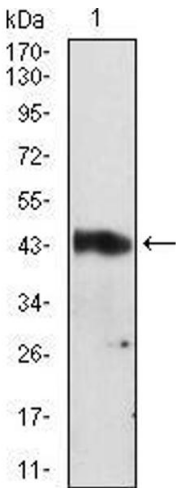
Preservative: Sodium azide

Precaution of Use: This product contains Sodium azide: a POISONOUS AND HAZARDOUS SUBSTANCE which should be handled by trained staff only.

Storage: 4 °C/-20 °C

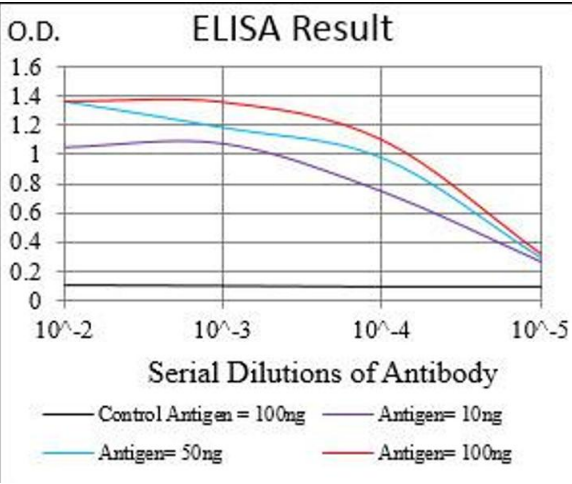
Storage Comment: 4°C, -20°C for long term storage

Images



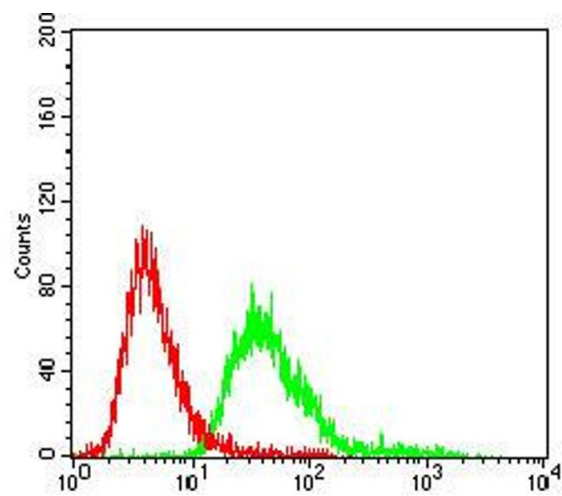
Western Blotting

Image 1. Western blot analysis using SERPINA3 mouse mAb against A549 cell lysate.



ELISA

Image 2. Black line: Control Antigen (100 ng), Purple line: Antigen(10 ng), Blue line: Antigen (50 ng), Red line: Antigen (100 ng),



Flow Cytometry

Image 3. Flow cytometric analysis of A549 cells using SERPINA3 mouse mAb (green) and negative control (red).

Please check the [product details page](#) for more images. Overall 7 images are available for ABIN5684069.