

Datasheet for ABIN5684070
anti-LILRB2 antibody (AA 51-184)

5 Images

[Go to Product page](#)

Overview

Quantity:	0.1 mg
Target:	LILRB2
Binding Specificity:	AA 51-184
Reactivity:	Human
Host:	Mouse
Clonality:	Monoclonal
Application:	Western Blotting (WB), ELISA, Immunohistochemistry (IHC), Flow Cytometry (FACS), Immunocytochemistry (ICC), Neutralization (Neut)

Product Details

Immunogen:	Purified recombinant fragment of human LILRB2 (AA: 51-184) expressed in E. coli.
Clone:	2G7E11
Isotype:	IgG2a
Purification:	purified

Target Details

Target:	LILRB2
Alternative Name:	LILRB2 (LILRB2 Products)
Background:	Description: This gene is a member of the leukocyte immunoglobulin-like receptor (LIR) family, which is found in a gene cluster at chromosomal region 19q13.4. The encoded protein belongs to the subfamily B class of LIR receptors which contain two or four extracellular

Target Details

immunoglobulin domains, a transmembrane domain, and two to four cytoplasmic immunoreceptor tyrosine-based inhibitory motifs (ITIMs). The receptor is expressed on immune cells where it binds to MHC class I molecules on antigen-presenting cells and transduces a negative signal that inhibits stimulation of an immune response. It is thought to control inflammatory responses and cytotoxicity to help focus the immune response and limit autoreactivity. Multiple transcript variants encoding different isoforms have been found for this gene.

Aliases: ILT4, LIR2, CD85D, ILT-4, LIR-2, MIR10, MIR-10

Molecular Weight: 65 kDa

Gene ID: 10288

HGNC: 8771

Pathways: [Cellular Response to Molecule of Bacterial Origin](#)

Application Details

Application Notes: ELISA: 1:10000, WB: 1:500 - 1:2000, ICC: N/A, FCM: 1:200 - 1:400, IHC: N/A

Restrictions: For Research Use only

Handling

Format: Liquid

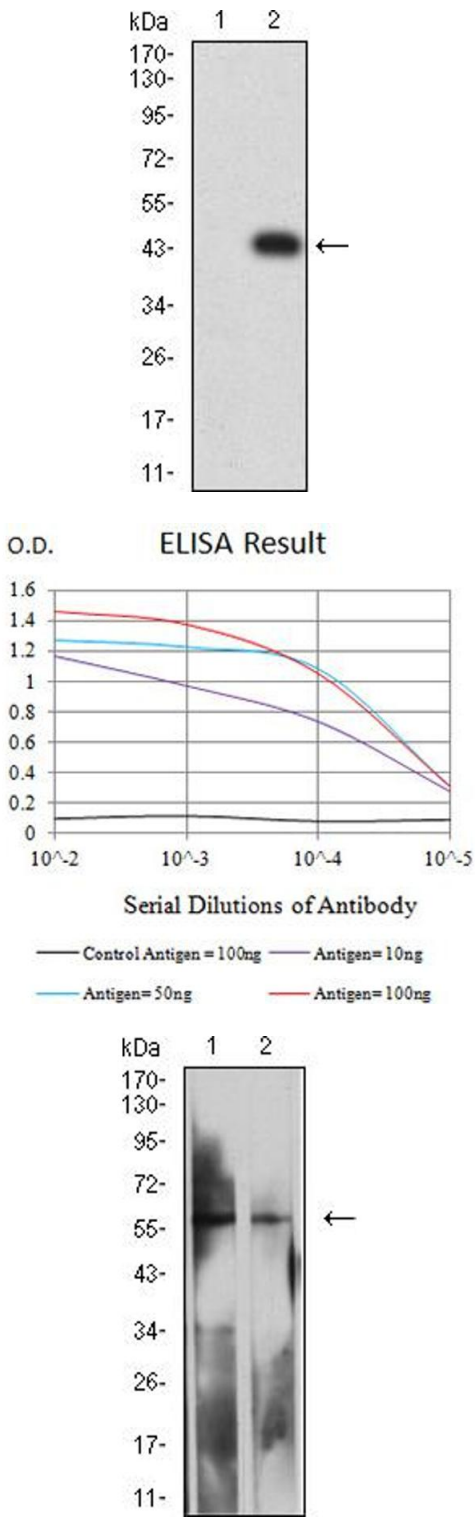
Buffer: Purified antibody in PBS with 0.05 % sodium azide

Preservative: Sodium azide

Precaution of Use: This product contains Sodium azide: a POISONOUS AND HAZARDOUS SUBSTANCE which should be handled by trained staff only.

Storage: 4 °C/-20 °C

Storage Comment: 4°C, -20°C for long term storage



Western Blotting

Image 1. Western blot analysis using LILRB2 mAb against HEK293 (1) and LILRB2 (AA: 51-184)-hlgGFc transfected HEK293 (2) cell lysate.

ELISA

Image 2. Black line: Control Antigen (100 ng),Purple line: Antigen (10 ng), Blue line: Antigen (50 ng), Red line:Antigen (100 ng)

Western Blotting

Image 3. Western blot analysis using LILRB2 mouse mAb against MOLT4 (1) and K562 (2) cell lysate.

Please check the [product details page](#) for more images. Overall 5 images are available for ABIN5684070.