



[Go to Product page](#)

Datasheet for ABIN5684073  
**anti-WT1 antibody (AA 314-479)**

4 Images

### Overview

Quantity:	0.1 mg
Target:	WT1
Binding Specificity:	AA 314-479
Reactivity:	Human
Host:	Mouse
Clonality:	Monoclonal
Application:	Flow Cytometry (FACS), Western Blotting (WB), ELISA

### Product Details

Immunogen:	Purified recombinant fragment of human WT1 (AA: 314-479) expressed in E. coli.
Clone:	5G11A5
Isotype:	IgG1 kappa
Purification:	purified

### Target Details

Target:	WT1
Alternative Name:	WT1 ( <a href="#">WT1 Products</a> )
Background:	Description: This gene encodes a transcription factor that contains four zinc-finger motifs at the C-terminus and a proline/glutamine-rich DNA-binding domain at the N-terminus. It has an essential role in the normal development of the urogenital system, and it is mutated in a small subset of patients with Wilm's tumors. This gene exhibits complex tissue-specific and

## Target Details

---

polymorphic imprinting pattern, with biallelic, and monoallelic expression from the maternal and paternal alleles in different tissues. Multiple transcript variants have been described. In several variants, there is evidence for the use of a non-AUG (CUG) translation initiation site upstream of and in-frame with the first AUG. Authors of PMID:7926762 also provide evidence that WT1 mRNA undergoes RNA editing in human and rat, and that this process is tissue-restricted and developmentally regulated.

Aliases: GUD, AWT1, WAGR, WT33, NPHS4, WIT-2, EWS-WT1

---

Molecular Weight: 49.2 kDa

---

Gene ID: 7490

---

HGNC: 7490

---

Pathways: [Tube Formation](#)

## Application Details

---

Application Notes: ELISA: 1:10000, WB: 1:500 - 1:2000, FCM: 1:200 - 1:400

---

Restrictions: For Research Use only

## Handling

---

Format: Liquid

---

Buffer: Purified antibody in PBS with 0.05 % sodium azide.

---

Preservative: Sodium azide

---

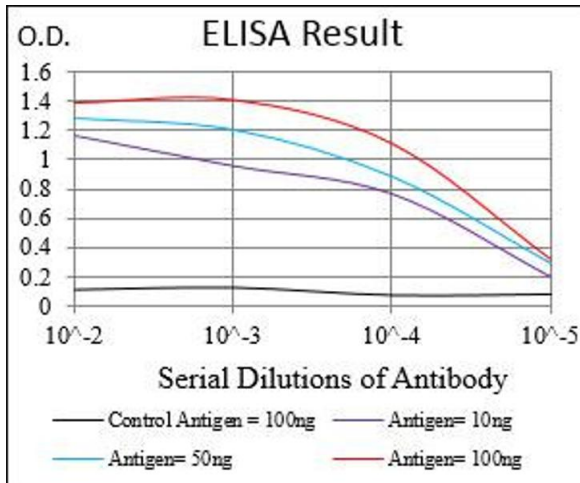
Precaution of Use: This product contains Sodium azide: a POISONOUS AND HAZARDOUS SUBSTANCE which should be handled by trained staff only.

---

Storage: 4 °C/-20 °C

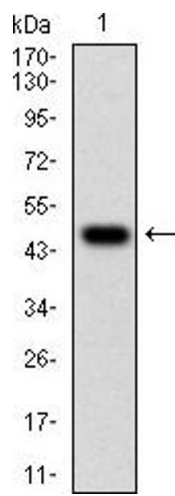
---

Storage Comment: 4°C, -20°C for long term storage



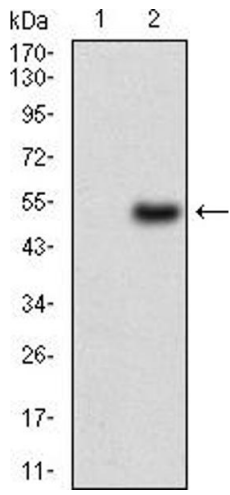
**ELISA**

**Image 1.** Black line: Control Antigen (100 ng), Purple line: Antigen(10 ng), Blue line: Antigen (50 ng), Red line: Antigen (100 ng),



**Western Blotting**

**Image 2.** Western blot analysis using WT1 mAb against human WT1 (AA: 314-479) recombinant protein. (Expected MW is 47.6 kDa)



**Western Blotting**

**Image 3.** Western blot analysis using WT1 mAb against HEK293 (1) and WT1 (AA: 314-479)-hlgGfc transfected HEK293 (2) cell lysate.

Please check the [product details page](#) for more images. Overall 4 images are available for ABIN5684073.