

Datasheet for ABIN5684081  
**anti-LILRA5 antibody (AA 42-268)**

## 3 Images

[Go to Product page](#)

## Overview

|                      |   |
|----------------------|---|
| Quantity:            | 0.1 mg  |
| Target:              | LILRA5  |
| Binding Specificity: | AA 42-268   |
| Reactivity:          | Human   |
| Host:                | Mouse   |
| Clonality:           | Monoclonal  |
| Conjugate:           | This LILRA5 antibody is un-conjugated   |
| Application:         | Western Blotting (WB), ELISA, Flow Cytometry (FACS), Immunocytochemistry (ICC), Immunohistochemistry (IHC), Neutralization (Neut) |

## Product Details

|               |  |
|---------------|--|
| Immunogen:    | Purified recombinant fragment of human LILRA5 (AA: extra 42-268) expressed in E. coli. |
| Clone:        | 1B5D10   |
| Isotype:      | IgG2a  |
| Purification: | purified   |

## Target Details

|                   |  |
|-------------------|--|
| Target:           | LILRA5   |
| Alternative Name: | LILRA5 ( <a href="#">LILRA5 Products</a> )   |
| Background:       | Description: The protein encoded by this gene is a member of the leukocyte immunoglobulin- |

## Target Details

like receptor (LIR) family. LIR family members are known to have activating and inhibitory functions in leukocytes. Crosslink of this receptor protein on the surface of monocytes has been shown to induce calcium flux and secretion of several proinflammatory cytokines, which suggests the roles of this protein in triggering innate immune responses. This gene is one of the leukocyte receptor genes that form a gene cluster on the chromosomal region 19q13.4. Four alternatively spliced transcript variants encoding distinct isoforms have been described. Aliases: CD85, LIR9, CD85F, ILT11, LIR-9, ILT-11, LILRB7

|                   |          |
|-------------------|----------|
| Molecular Weight: | 32.8 kDa |
|-------------------|----------|

|          |        |
|----------|--------|
| Gene ID: | 353514 |
|----------|--------|

|       |       |
|-------|-------|
| HGNC: | 10288 |
|-------|-------|

## Application Details

|                    |  |
|--------------------|--|
| Application Notes: | ELISA: 1:10000, WB: 1:500 - 1:2000, ICC: N/A, FCM: N/A, IHC: N/A |
|--------------------|--|

|               |                       |
|---------------|-----------------------|
| Restrictions: | For Research Use only |
|---------------|-----------------------|

## Handling

|         |        |
|---------|--------|
| Format: | Liquid |
|---------|--------|

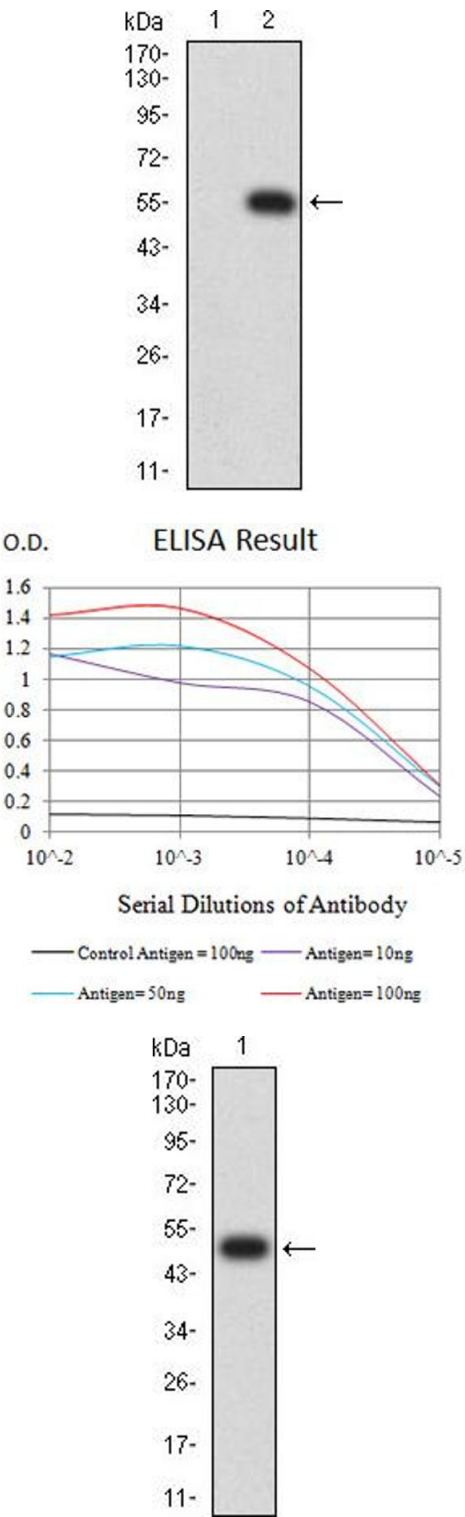
|         |   |
|---------|---|
| Buffer: | Purified antibody in PBS with 0.05 % sodium azide |
|---------|---|

|               |              |
|---------------|--------------|
| Preservative: | Sodium azide |
|---------------|--------------|

|                    |  |
|--------------------|--|
| Precaution of Use: | This product contains Sodium azide: a POISONOUS AND HAZARDOUS SUBSTANCE which should be handled by trained staff only. |
|--------------------|--|

|          |             |
|----------|-------------|
| Storage: | 4 °C/-20 °C |
|----------|-------------|

|                  |                                  |
|------------------|----------------------------------|
| Storage Comment: | 4°C, -20°C for long term storage |
|------------------|----------------------------------|



Western Blotting

**Image 1.** Western blot analysis using LILRA5 mAb against HEK293 (1) and LILRA5 (AA: extra 42-268)-hlgGFc transfected HEK293 (2) cell lysate.

ELISA

**Image 2.** Black line: Control Antigen (100 ng),Purple line: Antigen (10 ng), Blue line: Antigen (50 ng), Red line:Antigen (100 ng)

Western Blotting

**Image 3.** Western blot analysis using LILRA5 mAb against human LILRA5 (AA: extra 42-268) recombinant protein. (Expected MW is 51.2 kDa)