

Datasheet for ABIN5684090
anti-TLL1 antibody (AA 870-1013)[Go to Product page](#)

4 Images

Overview

| | |
|----------------------|---|
| Quantity: | 0.1 mg |
| Target: | TLL1 |
| Binding Specificity: | AA 870-1013 |
| Reactivity: | Human |
| Host: | Mouse |
| Clonality: | Monoclonal |
| Conjugate: | This TLL1 antibody is un-conjugated |
| Application: | ELISA, Western Blotting (WB), Immunohistochemistry (IHC), Flow Cytometry (FACS), Immunocytochemistry (ICC), Neutralization (Neut) |

Product Details

| | |
|---------------|--|
| Immunogen: | Purified recombinant fragment of human TLL1 (AA: 870-1013) expressed in E. coli. |
| Clone: | 4H8C1 |
| Isotype: | IgG1 |
| Purification: | purified |

Target Details

| | |
|-------------------|---|
| Target: | TLL1 |
| Alternative Name: | TLL1 (TLL1 Products) |
| Background: | Description: This gene encodes an astacin-like, zinc-dependent, metalloprotease that belongs to |

Target Details

the peptidase M12A family. This protease processes procollagen C-propeptides, such as chordin, pro-biglycan and pro-lysyl oxidase. Studies in mice suggest that this gene plays multiple roles in the development of mammalian heart, and is essential for the formation of the interventricular septum. Allelic variants of this gene are associated with atrial septal defect type 6. Alternatively spliced transcript variants encoding different isoforms have been found for this gene.

Aliases: TLL, ASD6

| | |
|-------------------|-----------|
| Molecular Weight: | 114.7 kDa |
|-------------------|-----------|

| | |
|----------|------|
| Gene ID: | 7092 |
|----------|------|

| | |
|-------|------|
| HGNC: | 7092 |
|-------|------|

Application Details

| | |
|--------------------|--|
| Application Notes: | ELISA: 1:10000, WB: 1:500 - 1:2000, ICC: N/A, FCM: 1:200 - 1:400, IHC: N/A |
|--------------------|--|

| | |
|---------------|-----------------------|
| Restrictions: | For Research Use only |
|---------------|-----------------------|

Handling

| | |
|---------|--------|
| Format: | Liquid |
|---------|--------|

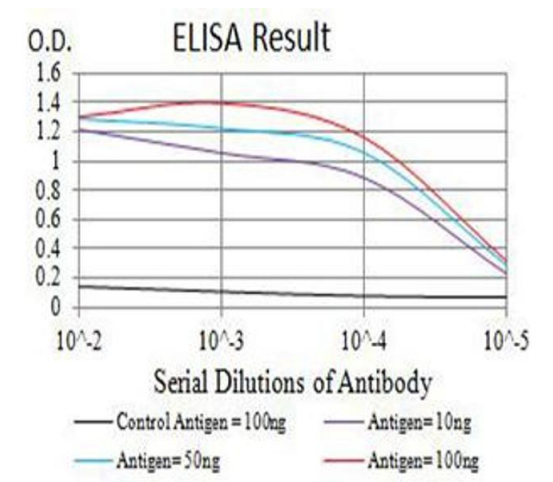
| | |
|---------|---|
| Buffer: | Purified antibody in PBS with 0.05 % sodium azide |
|---------|---|

| | |
|---------------|--------------|
| Preservative: | Sodium azide |
|---------------|--------------|

| | |
|--------------------|--|
| Precaution of Use: | This product contains Sodium azide: a POISONOUS AND HAZARDOUS SUBSTANCE which should be handled by trained staff only. |
|--------------------|--|

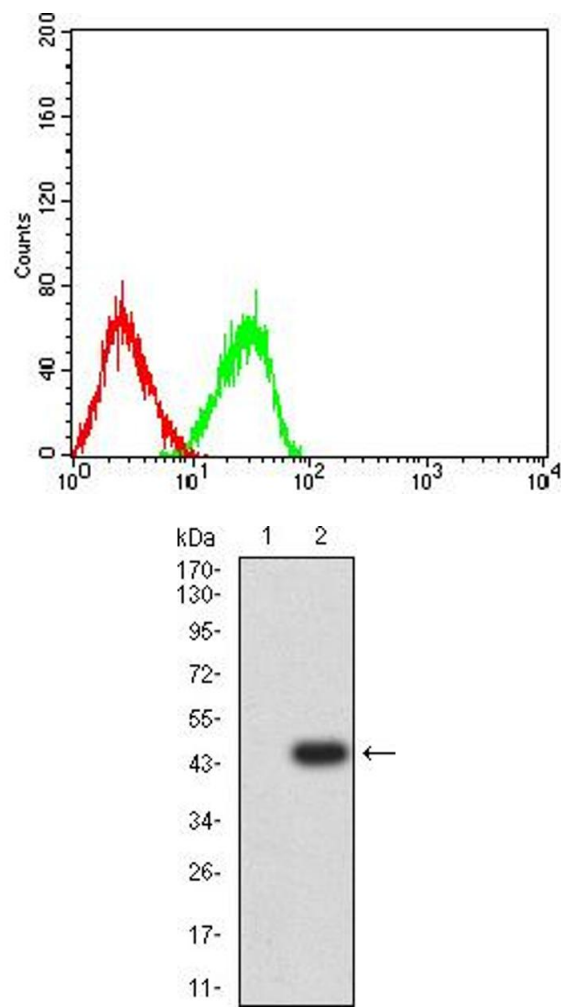
| | |
|----------|-------------|
| Storage: | 4 °C/-20 °C |
|----------|-------------|

| | |
|------------------|----------------------------------|
| Storage Comment: | 4°C, -20°C for long term storage |
|------------------|----------------------------------|



ELISA

Image 1. Black line: Control Antigen (100 ng),Purple line: Antigen (10 ng), Blue line: Antigen (50 ng), Red line:Antigen (100 ng)



Flow Cytometry

Image 2. Flow cytometric analysis of HL-60 cells using TLL1 mouse mAb (green) and negative control (red).

Western Blotting

Image 3. Western blot analysis using TLL1 mAb against HEK293 (1) and TLL1 (AA: 870-1013)-hlgGfC transfected HEK293 (2) cell lysate.

Please check the [product details page](#) for more images. Overall 4 images are available for ABIN5684090.