

Datasheet for ABIN5684109  
**anti-CD42b antibody (AA 17-183)**



[Go to Product page](#)

6 Images

## Overview

Quantity:	100 µL
Target:	CD42b (GP1BA)
Binding Specificity:	AA 17-183
Reactivity:	Human
Host:	Mouse
Clonality:	Monoclonal
Conjugate:	This CD42b antibody is un-conjugated
Application:	Western Blotting (WB), Flow Cytometry (FACS), Immunohistochemistry (IHC), ELISA

## Product Details

Purpose:	CD42B Antibody
Immunogen:	Purified recombinant fragment of human CD42B (AA: 17-183) expressed in E. Coli.
Clone:	6H6H10
Isotype:	IgG1
Purification:	Purified antibody

## Target Details

Target:	CD42b (GP1BA)
Alternative Name:	CD42B ( <a href="#">GP1BA Products</a> )
Background:	Description: Glycoprotein Ib (GP Ib) is a platelet surface membrane glycoprotein composed of a

## Target Details

heterodimer, an alpha chain and a beta chain, that is linked by disulfide bonds. The Gp Ib functions as a receptor for von Willebrand factor (VWF). The complete receptor complex includes noncovalent association of the alpha and beta subunits with platelet glycoprotein IX and platelet glycoprotein V. The binding of the GP Ib-IX-V complex to VWF facilitates initial platelet adhesion to vascular subendothelium after vascular injury, and also initiates signaling events within the platelet that lead to enhanced platelet activation, thrombosis, and hemostasis. This gene encodes the alpha subunit. Mutations in this gene result in Bernard-Soulier syndromes and platelet-type von Willebrand disease. The coding region of this gene is known to contain a polymorphic variable number tandem repeat (VNTR) domain that is associated with susceptibility to nonarteritic anterior ischemic optic neuropathy.

Aliases: GP1BA, BSS, GP1B, VWDP, GPIbA, BDPLT1, BDPLT3, DBPLT3, GPIbalpha, CD42b-alpha

Molecular Weight: 71.5kDa

Gene ID: 2811

HGNC: 2209

## Application Details

Application Notes: ELISA: 1/10000  
FCM: 1/200 - 1/400

Restrictions: For Research Use only

## Handling

Format: Liquid

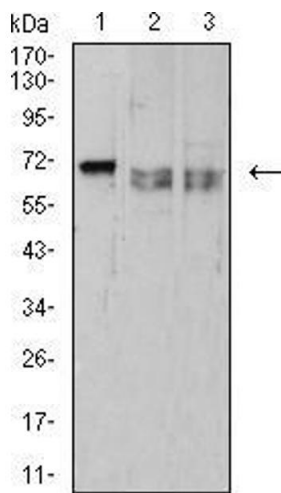
Buffer: Purified antibody in PBS with 0.05 % sodium azide.

Preservative: Sodium azide

Precaution of Use: This product contains Sodium azide: a POISONOUS AND HAZARDOUS SUBSTANCE which should be handled by trained staff only.

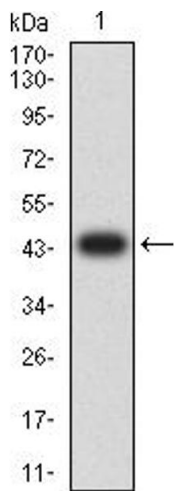
Storage: 4 °C,-20 °C

Storage Comment: Store at 4°C short term. Aliquot and store at -20°C long term. Avoid freeze/thaw cycles.



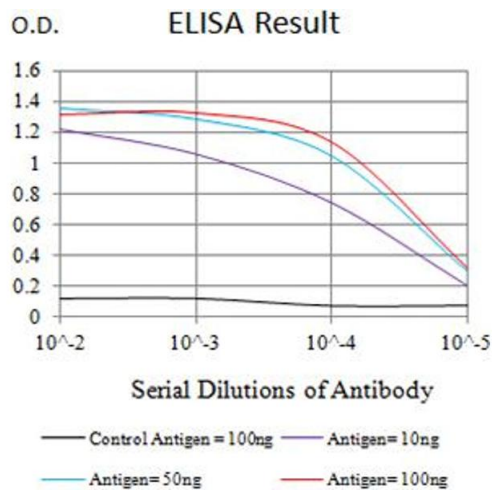
Western Blotting

**Image 1.** Western blot analysis using CD42B mouse mAb against HL-60 (1), MOLT4 (2), and Ramos (3) cell lysate.



Western Blotting

**Image 2.** Western blot analysis using CD42B mAb against human CD42B (AA: extra 17-183) recombinant protein. (Expected MW is 44.2 kDa)



ELISA

**Image 3.** Black line: Control Antigen (100 ng),Purple line: Antigen (10 ng), Blue line: Antigen (50 ng), Red line:Antigen (100 ng)

Please check the [product details page](#) for more images. Overall 6 images are available for ABIN5684109.