

Datasheet for ABIN5684114
anti-PROCR antibody (AA 18-210)

3 Images

[Go to Product page](#)

Overview

Quantity:	0.1 mg
Target:	PROCR
Binding Specificity:	AA 18-210
Reactivity:	Human
Host:	Mouse
Clonality:	Monoclonal
Application:	Western Blotting (WB), Immunohistochemistry (IHC), ELISA, Immunocytochemistry (ICC), Flow Cytometry (FACS), Neutralization (Neut)

Product Details

Immunogen:	Purified recombinant fragment of human CD201 (AA: extra 18-210) expressed in E. coli.
Clone:	5E11A12
Isotype:	IgG1
Purification:	purified

Target Details

Target:	PROCR
Alternative Name:	CD201 (PROCR Products)
Background:	Description: The protein encoded by this gene is a receptor for activated protein C, a serine protease activated by and involved in the blood coagulation pathway. The encoded protein is an N-glycosylated type I membrane protein that enhances the activation of protein C. Mutations in

Target Details

this gene have been associated with venous thromboembolism and myocardial infarction, as well as with late fetal loss during pregnancy. The encoded protein may also play a role in malarial infection and has been associated with cancer.

Aliases: CCCA, EPCR, CCD41

Molecular Weight: 26.7 kDa

Gene ID: 10544

HGNC: 135228

Application Details

Application Notes: ELISA: 1:10000, WB: 1:500 - 1:2000, ICC: N/A, FCM: N/A, IHC: N/A

Restrictions: For Research Use only

Handling

Format: Liquid

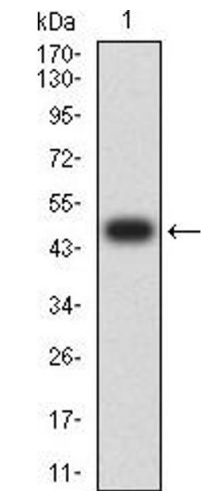
Buffer: Purified antibody in PBS with 0.05 % sodium azide

Preservative: Sodium azide

Precaution of Use: This product contains Sodium azide: a POISONOUS AND HAZARDOUS SUBSTANCE which should be handled by trained staff only.

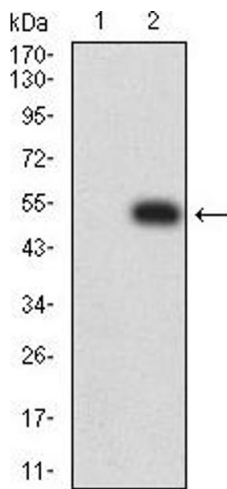
Storage: 4 °C/-20 °C

Storage Comment: 4°C, -20°C for long term storage



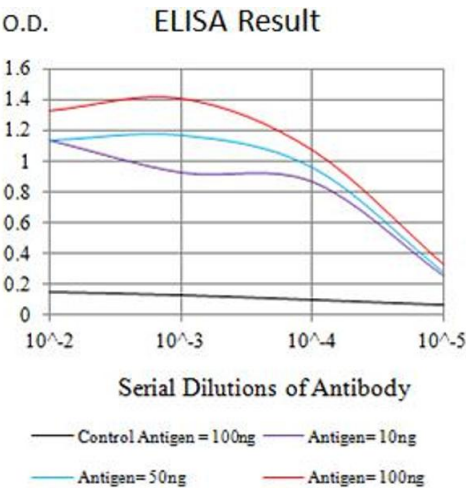
Western Blotting

Image 1. Western blot analysis using CD201 mAb against human CD201 (AA: extra 18-210) recombinant protein. (Expected MW is 47.9 kDa)



Western Blotting

Image 2. Western blot analysis using CD201 mAb against HEK293 (1) and CD201 (AA: extra 18-210)-hlgGFc transfected HEK293 (2) cell lysate.



ELISA

Image 3. Black line: Control Antigen (100 ng),Purple line: Antigen (10 ng), Blue line: Antigen (50 ng), Red line:Antigen (100 ng)