

Datasheet for ABIN5684116
anti-NCR1 antibody (AA 22-258)[Go to Product page](#)

4 Images

Overview

Quantity:	0.1 mg
Target:	NCR1
Binding Specificity:	AA 22-258
Reactivity:	Human
Host:	Mouse
Clonality:	Monoclonal
Application:	Western Blotting (WB), Flow Cytometry (FACS), ELISA, Immunohistochemistry (IHC), Immunocytochemistry (ICC), Neutralization (Neut)

Product Details

Immunogen:	Purified recombinant fragment of human CD335 (AA: extra 22-258) expressed in E. coli.
Clone:	2G3C1
Isotype:	IgG1
Purification:	purified

Target Details

Target:	NCR1
Alternative Name:	CD335 (NCR1 Products)
Background:	Description: NCR1 (Natural Cytotoxicity Triggering Receptor 1) is a Protein Coding gene. Diseases associated with NCR1 include Viral Infectious Disease. Among its related pathways are Immunoregulatory interactions between a Lymphoid and a non-Lymphoid cell and Natural

Target Details

Killer Cell Receptors: Human Target Cell - NK Cell Ligand-Receptor Interactions. GO annotations related to this gene include signal transducer activity, downstream of receptor. An important paralog of this gene is LILRB3.
Aliases: NCR1, LY94, NKP46, NK-p46

Molecular Weight: 34.5 kDa

Gene ID: 9437

HGNC: 974

Pathways: [Regulation of Leukocyte Mediated Immunity](#)

Application Details

Application Notes: ELISA: 1:10000, WB: 1:500 - 1:2000, ICC: N/A, FCM: 1:200 - 1:400, IHC: N/A

Restrictions: For Research Use only

Handling

Format: Liquid

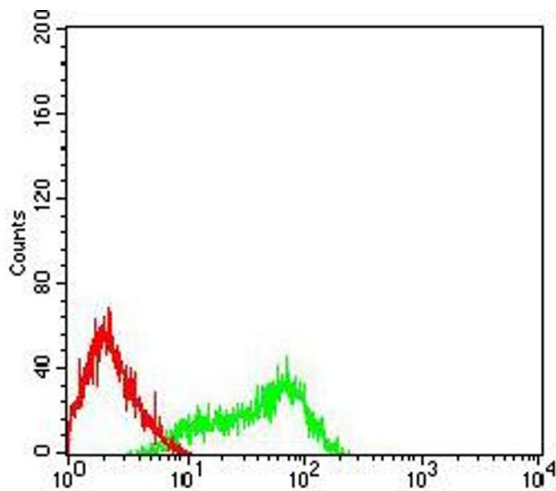
Buffer: Purified antibody in PBS with 0.05 % sodium azide

Preservative: Sodium azide

Precaution of Use: This product contains Sodium azide: a POISONOUS AND HAZARDOUS SUBSTANCE which should be handled by trained staff only.

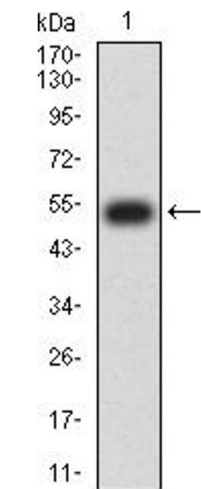
Storage: 4 °C/-20 °C

Storage Comment: 4°C, -20°C for long term storage



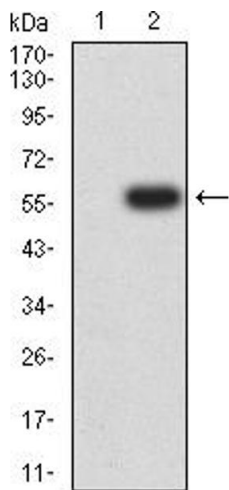
Flow Cytometry

Image 1. Flow cytometric analysis of HL-60 cells using CD335 mouse mAb (green) and negative control (red).



Western Blotting

Image 2. Western blot analysis using CD335 mAb against human CD335 (AA: extra 22-258) recombinant protein. (Expected MW is 52.8 kDa)



Western Blotting

Image 3. Western blot analysis using CD335 mAb against HEK293 (1) and CD335 (AA: extra 22-258)-hlgGFc transfected HEK293 (2) cell lysate.

Please check the [product details page](#) for more images. Overall 4 images are available for ABIN5684116.