

Datasheet for ABIN5684140
anti-LILRA3 antibody (AA 24-168)[Go to Product page](#)

4 Images

Overview

Quantity:	0.1 mg
Target:	LILRA3
Binding Specificity:	AA 24-168
Reactivity:	Human
Host:	Mouse
Clonality:	Monoclonal
Application:	Western Blotting (WB), ELISA, Immunohistochemistry (IHC), Flow Cytometry (FACS), Immunocytochemistry (ICC), Neutralization (Neut)

Product Details

Immunogen:	Purified recombinant fragment of human LILRA3 (AA: 24-168) expressed in E. coli.
Clone:	5F1D4
Isotype:	IgG1
Purification:	purified

Target Details

Target:	LILRA3
Alternative Name:	LILRA3 (LILRA3 Products)
Background:	Description: This gene encodes a member of a family of immunoreceptors that are expressed predominantly in monocytes and B cells, and at lower levels in dendritic cells and natural killer cells. The encoded protein lacks the transmembrane region found in other members of this

Target Details

family. It acts as a soluble receptor for class I major histocompatibility complex (MHC) antigens. Alternatively spliced transcript variants encoding different isoforms have been found. This gene is located in a cluster of related genes on chromosome 19 and is polymorphic in human populations, with many individuals containing a deletion of this genomic region.
Aliases: HM31, HM43, ILT6, LIR4, CD85E, ILT-6, LIR-4

Molecular Weight:	47.5 kDa
-------------------	----------

Gene ID:	11026
----------	-------

HGNC:	3675
-------	------

Application Details

Application Notes:	ELISA: 1:10000, WB: 1:500 - 1:2000, ICC: N/A, FCM: 1:200 - 1:400, IHC: N/A
--------------------	--

Restrictions:	For Research Use only
---------------	-----------------------

Handling

Format:	Liquid
---------	--------

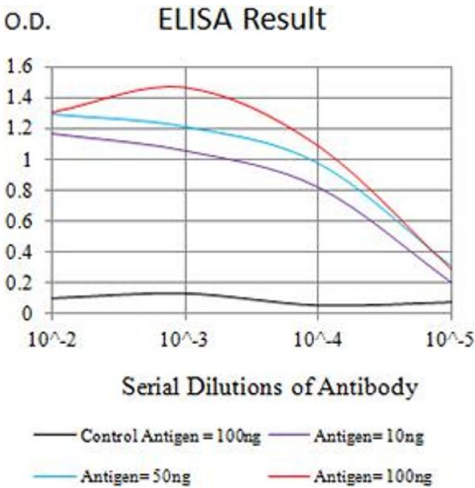
Buffer:	Purified antibody in PBS with 0.05 % sodium azide
---------	---

Preservative:	Sodium azide
---------------	--------------

Precaution of Use:	This product contains Sodium azide: a POISONOUS AND HAZARDOUS SUBSTANCE which should be handled by trained staff only.
--------------------	--

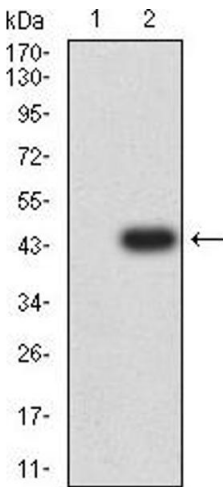
Storage:	4 °C/-20 °C
----------	-------------

Storage Comment:	4°C, -20°C for long term storage
------------------	----------------------------------



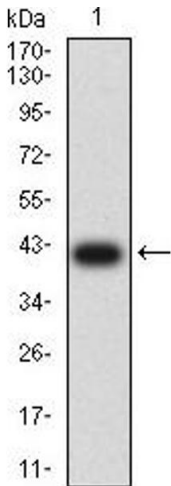
ELISA

Image 1. Black line: Control Antigen (100 ng),Purple line: Antigen (10 ng), Blue line: Antigen (50 ng), Red line:Antigen (100 ng)



Western Blotting

Image 2. Western blot analysis using LILRA3 mAb against HEK293 (1) and LILRA3 (AA: 24-168)-hlgGFc transfected HEK293 (2) cell lysate.



Western Blotting

Image 3. Western blot analysis using LILRA3 mAb against human LILRA3 (AA: 24-168) recombinant protein. (Expected MW is 41.7 kDa)

Please check the [product details page](#) for more images. Overall 4 images are available for ABIN5684140.