

Datasheet for ABIN5684146

**anti-P2RY2 antibody**

## 4 Images

[Go to Product page](#)

## Overview

|              |   |
|--------------|---|
| Quantity:    | 0.1 mg  |
| Target:      | P2RY2   |
| Reactivity:  | Human   |
| Host:        | Mouse   |
| Clonality:   | Monoclonal  |
| Conjugate:   | This P2RY2 antibody is un-conjugated  |
| Application: | Western Blotting (WB), ELISA, Immunohistochemistry (IHC), Immunocytochemistry (ICC), Flow Cytometry (FACS), Neutralization (Neut) |

## Product Details

|               |  |
|---------------|--|
| Immunogen:    | Purified recombinant fragment of human P2RY2 (AA: extra mix) expressed in E. coli. |
| Clone:        | 6H12F9   |
| Isotype:      | IgG2b  |
| Purification: | purified   |

## Target Details

|                   |  |
|-------------------|--|
| Target:           | P2RY2  |
| Alternative Name: | P2RY2 ( <a href="#">P2RY2 Products</a> )   |
| Background:       | Description: The product of this gene belongs to the family of P2 receptors, which is activated by extracellular nucleotides and subdivided into P2X ligand-gated ion channels and P2Y G-protein coupled receptors. This family has several receptor subtypes with different |

## Target Details

pharmacological selectivity, which overlaps in some cases, for various adenosine and uridine nucleotides. This receptor, found on many cell types, is activated by ATP and UTP and is reported to be overexpressed on some cancer cell types. It is involved in many cellular functions, such as proliferation, apoptosis and inflammation. Three transcript variants encoding the same protein have been identified for this gene.

Aliases: P2U, HP2U, P2U1, P2UR, P2Y2, P2RU1, P2Y2R

|                   |          |
|-------------------|----------|
| Molecular Weight: | 42.3 kDa |
|-------------------|----------|

|          |      |
|----------|------|
| Gene ID: | 5029 |
|----------|------|

|       |     |
|-------|-----|
| HGNC: | 953 |
|-------|-----|

|           |  |
|-----------|--|
| Pathways: | <a href="#">Cellular Response to Molecule of Bacterial Origin</a> , <a href="#">Smooth Muscle Cell Migration</a> |
|-----------|--|

## Application Details

|                    |  |
|--------------------|--|
| Application Notes: | ELISA: 1:10000, WB: 1:500 - 1:2000, ICC: N/A, FCM: 1:200 - 1:400, IHC: N/A |
|--------------------|--|

|               |                       |
|---------------|-----------------------|
| Restrictions: | For Research Use only |
|---------------|-----------------------|

## Handling

|         |        |
|---------|--------|
| Format: | Liquid |
|---------|--------|

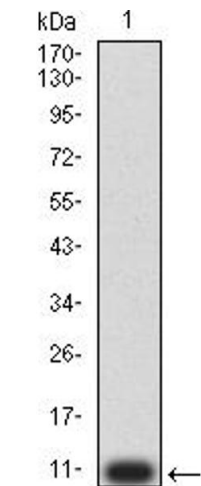
|         |   |
|---------|---|
| Buffer: | Purified antibody in PBS with 0.05 % sodium azide |
|---------|---|

|               |              |
|---------------|--------------|
| Preservative: | Sodium azide |
|---------------|--------------|

|                    |  |
|--------------------|--|
| Precaution of Use: | This product contains Sodium azide: a POISONOUS AND HAZARDOUS SUBSTANCE which should be handled by trained staff only. |
|--------------------|--|

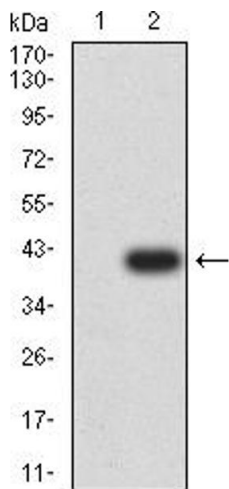
|          |             |
|----------|-------------|
| Storage: | 4 °C/-20 °C |
|----------|-------------|

|                  |                                  |
|------------------|----------------------------------|
| Storage Comment: | 4°C, -20°C for long term storage |
|------------------|----------------------------------|



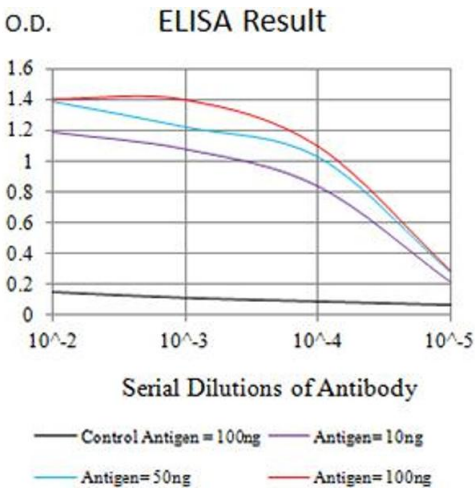
#### Western Blotting

**Image 1.** Western blot analysis using P2RY2 mAb against human P2RY2 (AA: extra mix) recombinant protein. (Expected MW is 10 kDa)



#### Western Blotting

**Image 2.** Western blot analysis using P2RY2 mAb against HEK293 (1) and P2RY2 (AA: extra mix)-hlgGFc transfected HEK293 (2) cell lysate.



#### ELISA

**Image 3.** Black line: Control Antigen (100 ng), Purple line: Antigen (10 ng), Blue line: Antigen (50 ng), Red line: Antigen (100 ng)

Please check the [product details page](#) for more images. Overall 4 images are available for ABIN5684146.