

Datasheet for ABIN5691110

**anti-Prostate Specific Antigen antibody****2** Images[Go to Product page](#)

## Overview

Quantity:	0.1 mg
Target:	Prostate Specific Antigen (PSA)
Reactivity:	Human, Cat
Host:	Mouse
Clonality:	Monoclonal
Conjugate:	This Prostate Specific Antigen antibody is un-conjugated
Application:	ELISA, Western Blotting (WB), Immunohistochemistry (Paraffin-embedded Sections) (IHC (p)), Flow Cytometry (FACS), Immunohistochemistry (Frozen Sections) (IHC (fro)), Immunocytochemistry (ICC)

## Product Details

Immunogen:	1A7 is a Mouse monoclonal IgG1/k antibody derived by fusion of SP2/0-Ag14 Mouse myeloma cells with spleen cells from a Mouse immunized with Human PSA.
Clone:	1A7
Isotype:	IgG1

## Target Details

Target:	Prostate Specific Antigen (PSA)
Alternative Name:	PSA ( <a href="#">PSA Products</a> )
Background:	Prostate-specific antigen (PSA), also known as gamma-seminoprotein or kallikrein-3 (KLK3), is a 33 kDa glycoprotein encoded in Humans by the KLK3 gene. PSA is a member of the kallikrein-

## Target Details

related peptidase family and is secreted by the epithelial cells of the prostate gland. PSA is present in small quantities in the Serum of men with healthy prostates, but is often elevated in the presence of prostate cancer or other prostate disorders.

Pathways: [Complement System](#)

## Application Details

Application Notes: 1A7 is suitable for immunocytochemistry, immuno-histochemistry on frozen and paraffin-embedded tissues, ELISA, Western blotting and flow cytometry. Optimal antibody dilution should be determined by titration.

Restrictions: For Research Use only

## Handling

Buffer: Each vial contains 100 µL 1 mg/mL purified monoclonal antibody in PBS containing 0.09 % sodium azide.

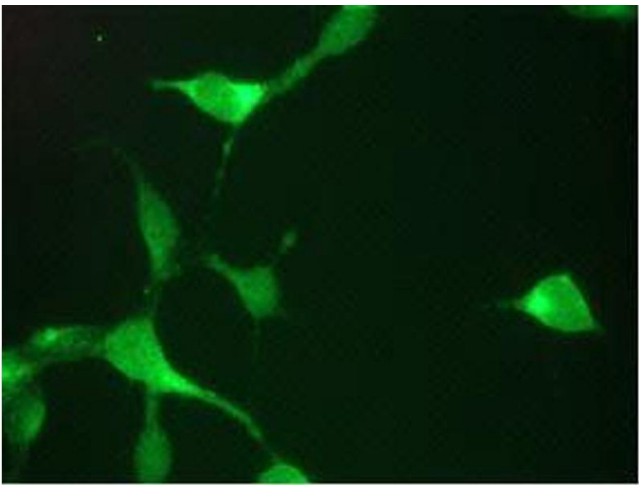
Preservative: Sodium azide

Precaution of Use: This product contains Sodium azide: a POISONOUS AND HAZARDOUS SUBSTANCE which should be handled by trained staff only.

Storage: 4 °C, -20 °C

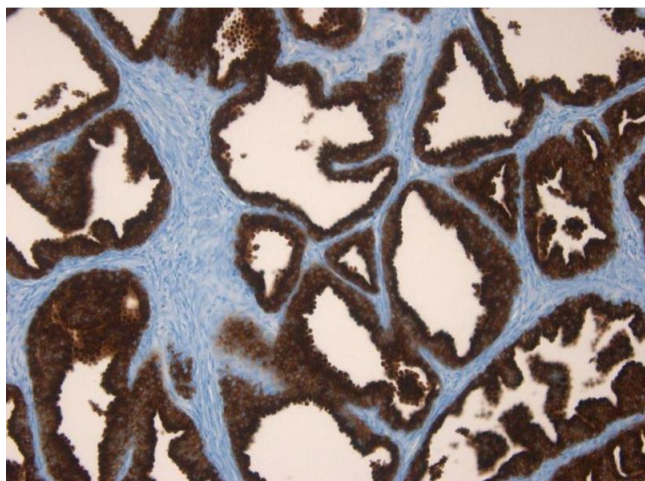
Storage Comment: Store at 4°C, or in small aliquots at -20°C.

## Images



### Immunofluorescence

**Image 1.** Immunofluorescent staining of LNCaP cells



#### Immunohistochemistry (Paraffin-embedded Sections)

**Image 2.** Immunohistochemistry on paraffin section of human prostate<sup>1</sup>