

Datasheet for ABIN5692833  
**anti-S100A10 antibody (AA 4-94)**



[Go to Product page](#)

6 Images

## Overview

Quantity:	100 µg
Target:	S100A10
Binding Specificity:	AA 4-94
Reactivity:	Human, Rat, Mouse
Host:	Rabbit
Clonality:	Polyclonal
Conjugate:	This S100A10 antibody is un-conjugated
Application:	Western Blotting (WB), Immunohistochemistry (IHC), ELISA

## Product Details

Brand:	Picoband™
Immunogen:	E. coli-derived human S100A10 recombinant protein (Position: Q4-K94).
Cross-Reactivity (Details):	No cross reactivity with other proteins.
Characteristics:	Rabbit IgG polyclonal antibody for S100A10 detection. Tested with WB, IHC-P, Direct ELISA in Human, Mouse, Rat.

## Target Details

Target:	S100A10
Alternative Name:	S100A10 ( <a href="#">S100A10 Products</a> )
Background:	Synonyms: Protein S100-A10, Calpactin I light chain, Calpactin-1 light chain, Cellular ligand of

## Target Details

annexin II, S100 calcium-binding protein A10, p10 protein, p11, S100A10, ANX2LG, CAL1L, CLP11

Background: S100 calcium-binding protein A10 (S100A10), also known as p11, is a protein that is encoded by the S100A10 gene in humans and the S100a10 gene in other species. The protein encoded by this gene is a member of the S100 family of proteins containing 2 EF-hand calcium-binding motifs. S100 proteins are localized in the cytoplasm and/or nucleus of a wide range of cells, and involved in the regulation of a number of cellular processes such as cell cycle progression and differentiation. S100 genes include at least 13 members which are located as a cluster on chromosome 1q21. This protein may function in exocytosis and endocytosis.

UniProt: [P60903](#)

Pathways: [S100 Proteins](#)

## Application Details

Application Notes: Recommended Detection Systems: Enhanced Chemiluminescent Kit with anti-Rabbit IgG (ABIN921124) for Western blot.  
Application Details: Western blot, 0.1-0.5 µg/mL  
Immunohistochemistry(Paraffin-embedded Section), 0.5-1 µg/mL  
Direct ELISA, 0.1-0.5 µg/mL

Restrictions: For Research Use only

## Handling

Format: Lyophilized

Reconstitution: Add 0.2 mL of distilled water will yield a concentration of 500 µg/mL.

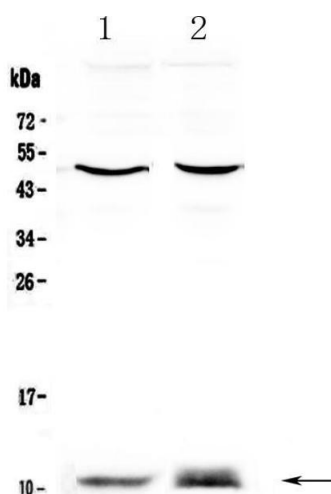
Buffer: Each vial contains 4 mg Trehalose, 0.9 mg NaCl, 0.2 mg Na<sub>2</sub>HPO<sub>4</sub>, 0.05 mg NaN<sub>3</sub>.

Preservative: Sodium azide

Precaution of Use: This product contains Sodium azide: a POISONOUS AND HAZARDOUS SUBSTANCE which should be handled by trained staff only.

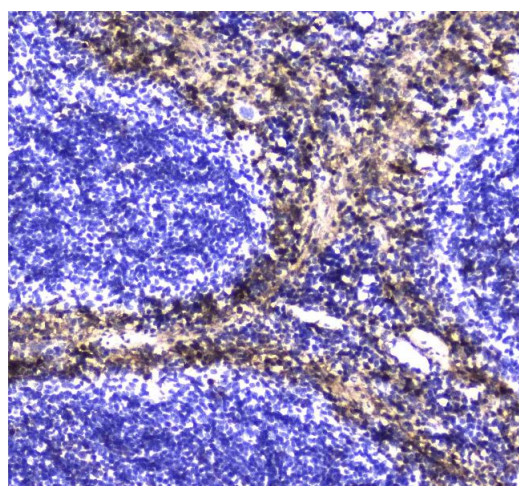
Storage: 4 °C, -20 °C

Storage Comment: At -20°C for one year. After reconstitution, at 4°C for one month.  
It can also be aliquotted and stored frozen at -20°C for a longer time. Avoid repeated freezing and thawing.



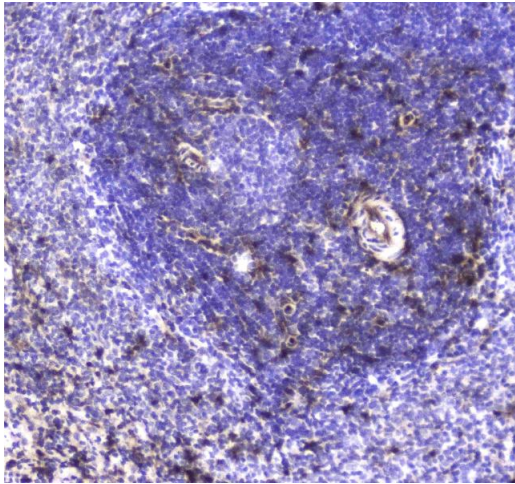
### Western Blotting

**Image 1.** Western blot analysis of S100A10 using anti-S100A10 antibody. Electrophoresis was performed on a 5-20% SDS-PAGE gel at 70V (Stacking gel) / 90V (Resolving gel) for 2-3 hours. The sample well of each Lane was loaded with 50ug of sample under reducing conditions. Lane 1: rat PC-12 whole cell lysates, Lane 2: mouse HEPA1-6 whole cell lysates. After Electrophoresis, proteins were transferred to a Nitrocellulose membrane at 150mA for 50-90 minutes. Blocked the membrane with 5% Non-fat Milk/ TBS for 1.5 hour at RT. The membrane was incubated with rabbit anti-S100A10 antigen affinity purified polyclonal antibody (Catalog # ) at 0.5 µg/mL overnight at 4°C, then washed with TBS-0.1%Tween 3 times with 5 minutes each and probed with a goat anti-rabbit IgG-HRP secondary antibody at a dilution of 1:10000 for 1.5 hour at RT. The signal is developed using an Enhanced Chemiluminescent detection (ECL) kit (Catalog # EK1002) with Tanon 5200 system. A specific band was detected for S100A10 at approximately 11KD. The expected band size for S100A10 is at 11KD.



### Immunohistochemistry

**Image 2.** IHC analysis of S100A10 using anti-S100A10 antibody. S100A10 was detected in paraffin-embedded section of human lung cancer tissue. Heat mediated antigen retrieval was performed in citrate buffer (pH6, epitope retrieval solution) for 20 mins. The tissue section was blocked with 10% goat serum. The tissue section was then incubated with 1µg/ml rabbit anti-S100A10 Antibody overnight at 4°C. Biotinylated goat anti-rabbit IgG was used as secondary antibody and incubated for 30 minutes at 37°C. The tissue section was developed using Streptavidin-Biotin-Complex (SABC)(Catalog # SA1022) with DAB as the chromogen.



#### Immunohistochemistry

**Image 3.** IHC analysis of S100A10 using anti-S100A10 antibody . S100A10 was detected in paraffin-embedded section of human mammary cancer tissue. Heat mediated antigen retrieval was performed in citrate buffer (pH6, epitope retrieval solution) for 20 mins. The tissue section was blocked with 10% goat serum. The tissue section was then incubated with 1µg/ml rabbit anti-S100A10 Antibody overnight at 4°C. Biotinylated goat anti-rabbit IgG was used as secondary antibody and incubated for 30 minutes at 37°C. The tissue section was developed using Streptavidin-Biotin-Complex (SABC)(Catalog # SA1022) with DAB as the chromogen.

Please check the [product details page](#) for more images. Overall 6 images are available for ABIN5692833.