

Datasheet for ABIN5692838
anti-Cullin 4A antibody (AA 494-759)[Go to Product page](#)

2 Images

Overview

Quantity:	100 µg
Target:	Cullin 4A (CUL4A)
Binding Specificity:	AA 494-759
Reactivity:	Human, Mouse, Rat
Host:	Rabbit
Clonality:	Polyclonal
Conjugate:	This Cullin 4A antibody is un-conjugated
Application:	Western Blotting (WB), ELISA

Product Details

Brand:	Picoband™
Immunogen:	E. coli-derived human Cullin 4a recombinant protein (Position: M494-A759).
Cross-Reactivity (Details):	No cross reactivity with other proteins.
Characteristics:	Rabbit IgG polyclonal antibody for Cullin 4a detection. Tested with WB, Direct ELISA in Human, Mouse, Rat.

Target Details

Target:	Cullin 4A (CUL4A)
Alternative Name:	CUL4A (CUL4A Products)
Background:	Synonyms: Cullin-4A, CUL-4A, CUL4A

Target Details

Background: Cullin-4A is a protein that in humans is encoded by the CUL4A gene. It belongs to the cullin family of ubiquitin ligase proteins and is highly homologous to the CUL4B protein. CUL4A regulates numerous key processes such as DNA repair, chromatin remodeling, spermatogenesis, haematopoiesis and the mitotic cell cycle. As a result, CUL4A has been implicated in several cancers and the pathogenesis of certain viruses including HIV. Interestingly, a component of a CUL4A complex, Cereblon, was discovered to be a major target of the teratogenic agent thalidomide.

UniProt: [Q13619](#)

Application Details

Application Notes: Recommended Detection Systems: Enhanced Chemiluminescent Kit with anti-Rabbit IgG (ABIN921124) for Western blot.
Application Details: Western blot, 0.1-0.5 µg/mL
Direct ELISA, 0.1-0.5 µg/mL

Restrictions: For Research Use only

Handling

Format: Lyophilized

Reconstitution: Add 0.2 mL of distilled water will yield a concentration of 500 µg/mL.

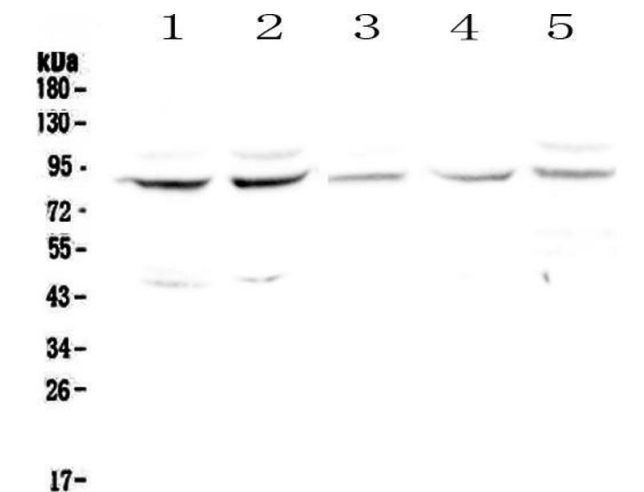
Buffer: Each vial contains 4 mg Trehalose, 0.9 mg NaCl, 0.2 mg Na₂HPO₄, 0.05 mg NaN₃.

Preservative: Sodium azide

Precaution of Use: This product contains Sodium azide: a POISONOUS AND HAZARDOUS SUBSTANCE which should be handled by trained staff only.

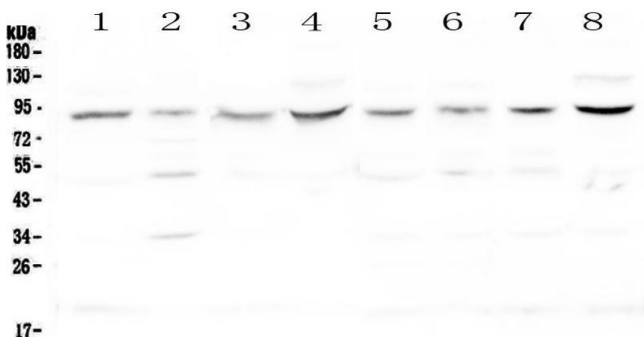
Storage: 4 °C, -20 °C

Storage Comment: At -20°C for one year. After reconstitution, at 4°C for one month.
It can also be aliquotted and stored frozen at -20°C for a longer time. Avoid repeated freezing and thawing.



Western Blotting

Image 1. Western blot analysis of Cullin 4a using anti-Cullin 4a antibody . Electrophoresis was performed on a 5-20% SDS-PAGE gel at 70V (Stacking gel) / 90V (Resolving gel) for 2-3 hours. The sample well of each Lane was loaded with 50ug of sample under reducing conditions. Lane 1: human Hela whole cell lysates, Lane 2: human COLO-320 whole cell lysates, Lane 3: human MDA-MB-231 whole cell lysates, Lane 4: human Jurkat whole cell lysates, Lane 5: human PANC-1 whole cell lysates. After Electrophoresis, proteins were transferred to a Nitrocellulose membrane at 150mA for 50-90 minutes. Blocked the membrane with 5% Non-fat Milk/ TBS for 1.5 hour at RT. The membrane was incubated with rabbit anti-Cullin 4a antigen affinity purified polyclonal antibody (Catalog #) at 0.5 µg/mL overnight at 4°C, then washed with TBS-0.1%Tween 3 times with 5 minutes each and probed with a goat anti-rabbit IgG-HRP secondary antibody at a dilution of 1:10000 for 1.5 hour at RT. The signal is developed using an Enhanced Chemiluminescent detection (ECL) kit (Catalog # EK1002) with Tanon 5200 system. A specific band was detected for Cullin 4a at approximately 88KD. The expected band size for Cullin 4a is at 88KD.



Western Blotting

Image 2. Western blot analysis of Cullin 4a using anti-Cullin 4a antibody . Electrophoresis was performed on a 5-20% SDS-PAGE gel at 70V (Stacking gel) / 90V (Resolving gel) for 2-3 hours. The sample well of each Lane was loaded with 50ug of sample under reducing conditions. Lane 1: rat brain tissue lysates, Lane 2: rat spleen tissue lysates, Lane 3: rat heart tissue lysates, Lane 4: rat testis tissue lysates, Lane 5: mouse brain tissue lysates, Lane 6: mouse spleen tissue lysates, Lane 7: mouse heart tissue lysates, Lane 8: mouse testis tissue lysates. After Electrophoresis, proteins were

transferred to a Nitrocellulose membrane at 150mA for 50-90 minutes. Blocked the membrane with 5% Non-fat Milk/TBS for 1.5 hour at RT. The membrane was incubated with rabbit anti-Cullin 4a antigen affinity purified polyclonal antibody (Catalog #) at 0.5 µg/mL overnight at 4°C, then washed with TBS-0.1%Tween 3 times with 5 minutes each and probed with a goat anti-rabbit IgG-HRP secondary antibody at a dilution of 1:10000 for 1.5 hour at RT. The signal is developed using an Enhanced Chemiluminescent detection (ECL) kit (Catalog # EK1002) with Tanon 5200 system. A specific band was detected for Cullin 4a at approximately 88KD. The expected band size for Cullin 4a is at 88KD.