

Datasheet for ABIN5692854

anti-Phospholipase C gamma 2 antibody (AA 1201-1258)



[Go to Product page](#)

5 Images

Overview

Quantity:	100 µg
Target:	Phospholipase C gamma 2 (PLCG2)
Binding Specificity:	AA 1201-1258
Reactivity:	Human, Rat, Mouse
Host:	Rabbit
Clonality:	Polyclonal
Conjugate:	This Phospholipase C gamma 2 antibody is un-conjugated
Application:	Western Blotting (WB), Immunohistochemistry (IHC), ELISA

Product Details

Immunogen:	E. coli-derived human PLCG 2 recombinant protein (Position: R1201-V1258).
Cross-Reactivity (Details):	No cross reactivity with other proteins.
Characteristics:	Rabbit IgG polyclonal antibody for PLCG 2 detection. Tested with WB, IHC-P, Direct ELISA in Human, Mouse, Rat.

Target Details

Target:	Phospholipase C gamma 2 (PLCG2)
Alternative Name:	PLCG2 (PLCG2 Products)
Background:	Synonyms: 1-phosphatidylinositol 4,5-bisphosphate phosphodiesterase gamma-2, Phosphoinositide phospholipase C-gamma-2, Phospholipase C-IV, PLC-IV, Phospholipase C-gamma-2, PLC-gamma-2, PLCG2

Target Details

Background: 1-Phosphatidylinositol-4,5-bisphosphate phosphodiesterase gamma-2 is an enzyme that in humans is encoded by the PLCG2 gene. The protein encoded by this gene is a transmembrane signaling enzyme that catalyzes the conversion of 1-phosphatidyl-1D-myo-inositol 4,5-bisphosphate to 1D-myo-inositol 1,4,5-trisphosphate (IP3) and diacylglycerol (DAG) using calcium as a cofactor. IP3 and DAG are second messenger molecules important for transmitting signals from growth factor receptors and immune system receptors across the cell membrane. Mutations in this gene have been found in autoinflammation, antibody deficiency, and immune dysregulation syndrome and familial cold autoinflammatory syndrome 3.

UniProt:	P16885
Pathways:	RTK Signaling , WNT Signaling , Fc-epsilon Receptor Signaling Pathway , Inositol Metabolic Process , Myometrial Relaxation and Contraction , Toll-Like Receptors Cascades , VEGF Signaling , BCR Signaling

Application Details

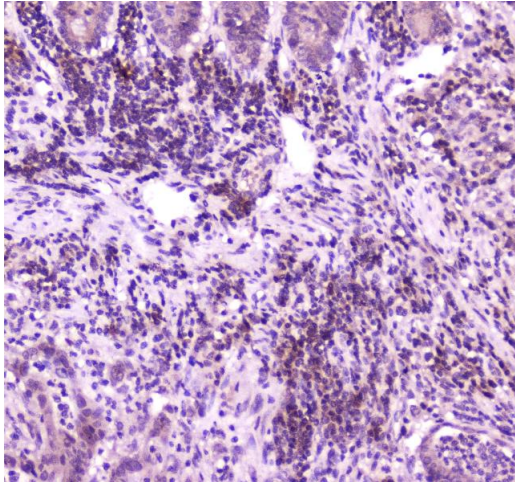
Application Notes:	<p>Recommended Detection Systems: Enhanced Chemiluminescent Kit with anti-Rabbit IgG (ABIN921124) for Western blot, and HRP Conjugated anti-Rabbit IgG Super Vision Assay Kit (SV0002-1) for IHC(P).</p> <p>Application Details: Western blot,0.1-0.5 µg/mL</p> <p>Immunohistochemistry(Paraffin-embedded Section),0.5-1 µg/mL</p> <p>Direct ELISA,0.1-0.5 µg/mL</p>
Restrictions:	For Research Use only

Handling

Format:	Lyophilized
Reconstitution:	Add 0.2 mL of distilled water will yield a concentration of 500 µg/mL.
Buffer:	Each vial contains 4 mg Trehalose, 0.9 mg NaCl, 0.2 mg Na ₂ HPO ₄ , 0.05 mg NaN ₃ .
Preservative:	Sodium azide
Precaution of Use:	This product contains Sodium azide: a POISONOUS AND HAZARDOUS SUBSTANCE which should be handled by trained staff only.
Storage:	4 °C,-20 °C
Storage Comment:	At -20°C for one year. After reconstitution, at 4°C for one month.

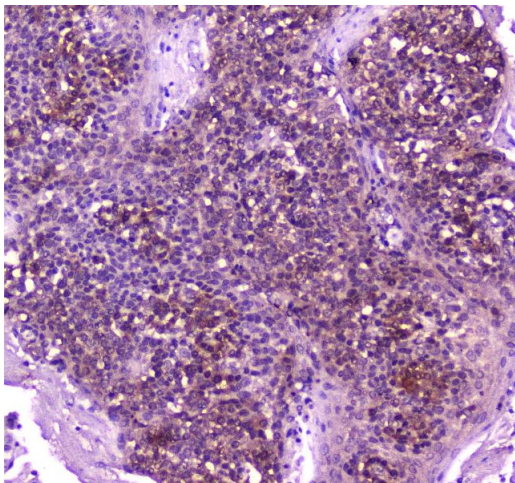
It can also be aliquotted and stored frozen at -20°C for a longer time. Avoid repeated freezing and thawing.

Images



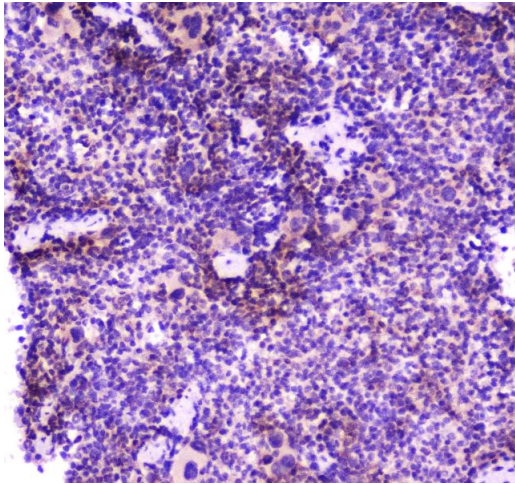
Immunohistochemistry

Image 1. IHC analysis of PLCG 2 using anti-PLCG 2 antibody . PLCG 2 was detected in paraffin-embedded section of human intestinal cancer tissue. Heat mediated antigen retrieval was performed in citrate buffer (pH6, epitope retrieval solution) for 20 mins. The tissue section was blocked with 10% goat serum. The tissue section was then incubated with 2µg/ml rabbit anti-PLCG 2 Antibody overnight at 4°C. Biotinylated goat anti-rabbit IgG was used as secondary antibody and incubated for 30 minutes at 37°C. The tissue section was developed using Streptavidin-Biotin-Complex (SABC)(Catalog # SA1022) with DAB as the chromogen.



Immunohistochemistry

Image 2. IHC analysis of PLCG 2 using anti-PLCG 2 antibody . PLCG 2 was detected in paraffin-embedded section of human tonsil tissue. Heat mediated antigen retrieval was performed in citrate buffer (pH6, epitope retrieval solution) for 20 mins. The tissue section was blocked with 10% goat serum. The tissue section was then incubated with 2µg/ml rabbit anti-PLCG 2 Antibody overnight at 4°C. Biotinylated goat anti-rabbit IgG was used as secondary antibody and incubated for 30 minutes at 37°C. The tissue section was developed using Streptavidin-Biotin-Complex (SABC)(Catalog # SA1022) with DAB as the chromogen.



Immunohistochemistry

Image 3. IHC analysis of PLCG 2 using anti-PLCG 2 antibody . PLCG 2 was detected in paraffin-embedded section of mouse spleen tissue. Heat mediated antigen retrieval was performed in citrate buffer (pH6, epitope retrieval solution) for 20 mins. The tissue section was blocked with 10% goat serum. The tissue section was then incubated with 2µg/ml rabbit anti-PLCG 2 Antibody overnight at 4°C. Biotinylated goat anti-rabbit IgG was used as secondary antibody and incubated for 30 minutes at 37°C. The tissue section was developed using Streptavidin-Biotin-Complex (SABC)(Catalog # SA1022) with DAB as the chromogen.

Please check the [product details page](#) for more images. Overall 5 images are available for ABIN5692854.