

Datasheet for ABIN5692882  
**anti-IL-25 antibody (AA 33-177)**



[Go to Product page](#)

1 Image

## Overview

Quantity:	100 µg
Target:	IL-25 (IL25)
Binding Specificity:	AA 33-177
Reactivity:	Human, Mouse, Rat
Host:	Rabbit
Clonality:	Polyclonal
Conjugate:	This IL-25 antibody is un-conjugated
Application:	Western Blotting (WB), ELISA

## Product Details

Brand:	Picoband™
Immunogen:	E. coli-derived human IL17E recombinant protein (Position: Y33-G177).
Cross-Reactivity (Details):	No cross reactivity with other proteins.
Characteristics:	Rabbit IgG polyclonal antibody for IL17E detection. Tested with WB, ELISA(Cap) in Human,Mouse,Rat.

## Target Details

Target:	IL-25 (IL25)
Alternative Name:	IL25 ( <a href="#">IL25 Products</a> )
Background:	Synonyms: Interleukin-25, IL-25, Interleukin-17E, IL-17E, IL25, IL17E, UNQ3120/PRO10272

## Target Details

Tissue Specificity: Expressed at low levels in several tissues, including brain, kidney, lung, prostate, testis, spinal cord, adrenal gland, and trachea.

UniProt: [Q9H293](#)

## Application Details

Application Notes: Recommended Detection Systems: Enhanced Chemiluminescent Kit with anti-Rabbit IgG (ABIN921124) for Western blot.

Application Details: Western blot, 0.1-0.5 µg/mL

ELISA(Cap), 1-5 µg/mL

Restrictions: For Research Use only

## Handling

Format: Lyophilized

Reconstitution: Add 0.2 mL of distilled water will yield a concentration of 500 µg/mL.

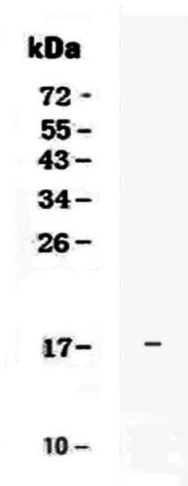
Buffer: Each vial contains 4 mg Trehalose, 0.9 mg NaCl, 0.2 mg Na<sub>2</sub>HPO<sub>4</sub>, 0.05 mg NaN<sub>3</sub>.

Preservative: Sodium azide

Precaution of Use: This product contains Sodium azide: a POISONOUS AND HAZARDOUS SUBSTANCE which should be handled by trained staff only.

Storage: 4 °C,-20 °C

Storage Comment: At -20°C for one year. After reconstitution, at 4°C for one month.  
It can also be aliquotted and stored frozen at -20°C for a longer time. Avoid repeated freezing and thawing.



Western Blotting

**Image 1.** Western blot analysis of IL17E using anti-IL17E antibody . Electrophoresis was performed on a 5-20% SDS-PAGE gel at 70V (Stacking gel) / 90V (Resolving gel) for 2-3 hours. Lane 1: recombinant human IL25 protein 1ng. After Electrophoresis, proteins were transferred to a Nitrocellulose membrane at 150mA for 50-90 minutes. Blocked the membrane with 5% Non-fat Milk/ TBS for 1.5 hour at RT. The membrane was incubated with rabbit anti-IL17E antigen affinity purified polyclonal antibody (Catalog # ) at 0.5 µg/mL overnight at 4°C, then washed with TBS-0.1%Tween 3 times with 5 minutes each and probed with a goat anti-rabbit IgG-HRP secondary antibody at a dilution of 1:10000 for 1.5 hour at RT. The signal is developed using an Enhanced Chemiluminescent detection (ECL) kit (Catalog # EK1002) with Tanon 5200 system. A specific band was detected for IL17E at approximately 17KD. The expected band size for IL17E is at 17KD.