

Datasheet for ABIN5692889

anti-Laminin gamma 1 antibody (all Isoforms)

5 Images

2 Publications

[Go to Product page](#)

Overview

Quantity:	100 µg
Target:	Laminin gamma 1 (LAMC1)
Binding Specificity:	all Isoforms
Reactivity:	Human, Mouse, Rat
Host:	Rabbit
Clonality:	Polyclonal
Conjugate:	This Laminin gamma 1 antibody is un-conjugated
Application:	Western Blotting (WB), Immunohistochemistry (IHC)

Product Details

Brand:	Picoband™
Immunogen:	Peptide mixture of laminin gamma1,2,3(NKLNEIEGSLNKAKDEMKAS, DLEERVRRQRNHLHLLLETSI, LQLDSHGALHHKLRQLEEEES). Laminin gamma has only three subtypes of antibody to gamma1-3 reactive with all isoforms of laminin.
Sequence:	NKLNEIEGSL NKAKDEMKAS ,DLEERVRRQR NHLHLLLETSI ,LQLDSHGALH HKLRQLEEEES
Cross-Reactivity (Details):	No cross reactivity with other proteins.
Characteristics:	Rabbit IgG polyclonal antibody for Laminin subunit gamma-1&Laminin subunit gamma-2&Laminin subunit gamma-3(Lamc1 Lamc2 Lamc3) detection. Tested with WB, IHC-P in Human,Mouse,Rat.
Purification:	Immunogen affinity purified.

Target Details

Target:	Laminin gamma 1 (LAMC1)
Alternative Name:	Lamc1 (LAMC1 Products)
Background:	Synonyms: Laminin subunit gamma-1,Laminin B2 chain,Laminin-1 subunit gamma,Laminin-10 subunit gamma,Laminin-11 subunit gamma,Laminin-2 subunit gamma,Laminin-3 subunit gamma,Laminin-4 subunit gamma,Laminin-6 subunit gamma,Laminin-7 subunit gamma,Laminin-8 subunit gamma,Laminin-9 subunit gamma,S-laminin subunit gamma,S-LAM gamma,Lamc1,Lamb-2, Lamc-1, Tissue Specificity: Found in the basement membranes (major component).
Molecular Weight:	177298 MW
UniProt:	P02468

Application Details

Application Notes:	Recommended Detection Systems: Enhanced Chemiluminescent Kit with anti-Rabbit IgG (ABIN921124) for Western blot, and HRP Conjugated anti-Rabbit IgG Super Vision Assay Kit (SV0002-1) for IHC(P). Application Details: Immunohistochemistry(Paraffin-embedded Section), 0.5-1 µg/mL, Mouse, Rat, By Heat Western blot, 0.1-0.5 µg/mL, Human, Mouse, Rat,
Restrictions:	For Research Use only

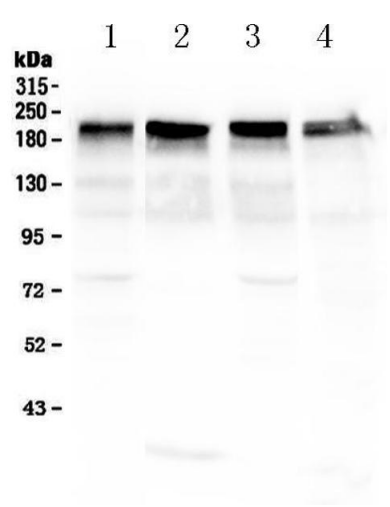
Handling

Format:	Lyophilized
Reconstitution:	Add 0.2 mL of distilled water will yield a concentration of 500 µg/mL.
Concentration:	500 µg/mL
Buffer:	Each vial contains 5 mg BSA, 0.9 mg NaCl, 0.2 mg Na2HPO4, 0.05 mg Sodium azide.
Preservative:	Sodium azide
Precaution of Use:	This product contains Sodium azide: a POISONOUS AND HAZARDOUS SUBSTANCE which should be handled by trained staff only.
Storage:	4 °C,-20 °C
Storage Comment:	At -20°C for one year. After reconstitution, at 4°C for one month. It can also be aliquotted and stored frozen at -20°C for a longer time. Avoid repeated freezing and thawing.

Product cited in: Fu, Hu, Dang, Chang, Du, Wu, Gao: "Remarkable preservation of Ca(2+) homeostasis and inhibition of apoptosis contribute to anti-muscle atrophy effect in hibernating Daurian ground squirrels." in: **Scientific reports**, Vol. 6, pp. 27020, (2018) ([PubMed](#)).

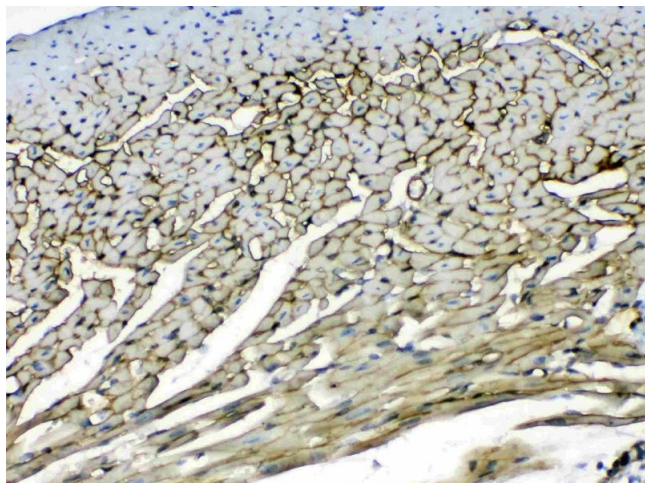
Chen, Wang, Liu, Fang, Tan, Zhou, Zhou, Lv: "Highly effective ex vivo gene manipulation to study kidney development using self-complementary adenoassociated viruses." in: **TheScientificWorldJournal**, Vol. 2014, pp. 682189, (2014) ([PubMed](#)).

Images



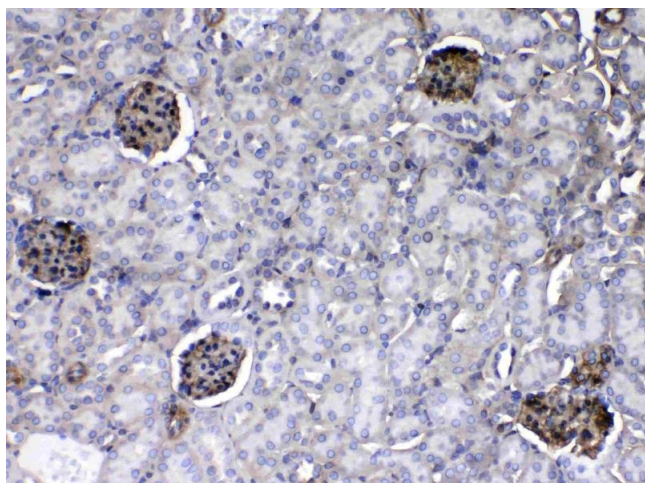
Western Blotting

Image 1. Western blot analysis of Laminin using anti-Laminin antibody . Electrophoresis was performed on a 5-20% SDS-PAGE gel at 70V (Stacking gel) / 90V (Resolving gel) for 2-3 hours. The sample well of each Lane was loaded with 50ug of sample under reducing conditions. Lane 1: mouse lung tissue lysate, Lane 2: rat cardiac muscle tissue lysate, Lane 3: rat lung tissue lysate, Lane 4: human Hela whole cell lysate. After Electrophoresis, proteins were transferred to a Nitrocellulose membrane at 150mA for 50-90 minutes. Blocked the membrane with 5% Non-fat Milk/TBS for 1.5 hour at RT. The membrane was incubated with rabbit anti-Laminin antigen affinity purified polyclonal antibody (Catalog #) at 0.5 µg/mL overnight at 4°C, then washed with TBS-0.1%Tween 3 times with 5 minutes each and probed with a goat anti-rabbit IgG-HRP secondary antibody at a dilution of 1:10000 for 1.5 hour at RT. The signal is developed using an Enhanced Chemiluminescent detection (ECL) kit (Catalog # EK1002) with Tanon 5200 system. A specific band was detected for Laminin at approximately 200KD. The expected band size for Laminin is at 177KD.



Immunohistochemistry

Image 2. IHC analysis of Laminin using anti-Laminin antibody . Laminin was detected in paraffin-embedded section of mouse heart tissue . Heat mediated antigen retrieval was performed in citrate buffer (pH6, epitope retrieval solution) for 20 mins. The tissue section was blocked with 10% goat serum. The tissue section was then incubated with 1µg/ml rabbit anti-Laminin Antibody overnight at 4°C. Biotinylated goat anti-rabbit IgG was used as secondary antibody and incubated for 30 minutes at 37°C. The tissue section was developed using Streptavidin-Biotin-Complex (SABC)(Catalog # SA1022) with DAB as the chromogen.



Immunohistochemistry

Image 3. IHC analysis of Laminin using anti-Laminin antibody . Laminin was detected in paraffin-embedded section of mouse kidney tissue . Heat mediated antigen retrieval was performed in citrate buffer (pH6, epitope retrieval solution) for 20 mins. The tissue section was blocked with 10% goat serum. The tissue section was then incubated with 1µg/ml rabbit anti-Laminin Antibody overnight at 4°C. Biotinylated goat anti-rabbit IgG was used as secondary antibody and incubated for 30 minutes at 37°C. The tissue section was developed using Streptavidin-Biotin-Complex (SABC)(Catalog # SA1022) with DAB as the chromogen.

Please check the [product details page](#) for more images. Overall 5 images are available for ABIN5692889.